

# **SAP Mobile Documents 1.0 SP01: Prerequisites**

Supported Platforms and supported clients for SAP Mobile Documents 1.0 SP01

**Document Version 2.0**  
September 2013

© 2013 SAP AG. All rights reserved.

SAP, R/3, SAP NetWeaver, Duet, PartnerEdge, ByDesign, SAP BusinessObjects Explorer, StreamWork, SAP HANA, and other SAP products and services mentioned herein as well as their respective logos are trademarks or registered trademarks of SAP AG in Germany and other countries.

Business Objects and the Business Objects logo, BusinessObjects, Crystal Reports, Crystal Decisions, Web Intelligence, Xcelsius, and other Business Objects products and services mentioned herein as well as their respective logos are trademarks or registered trademarks of Business Objects Software Ltd. Business Objects is an SAP company.

Sybase and Adaptive Server, iAnywhere, Sybase 365, SQL Anywhere, and other Sybase products and services mentioned herein as well as their respective logos are trademarks or registered trademarks of Sybase Inc. Sybase is an SAP company.

Crossgate, m@gic EDDY, B2B 360°, and B2B 360° Services are registered trademarks of Crossgate AG in Germany and other countries. Crossgate is an SAP company.

All other product and service names mentioned are the trademarks of their respective companies. Data contained in this document serves informational purposes only. National product specifications may vary.

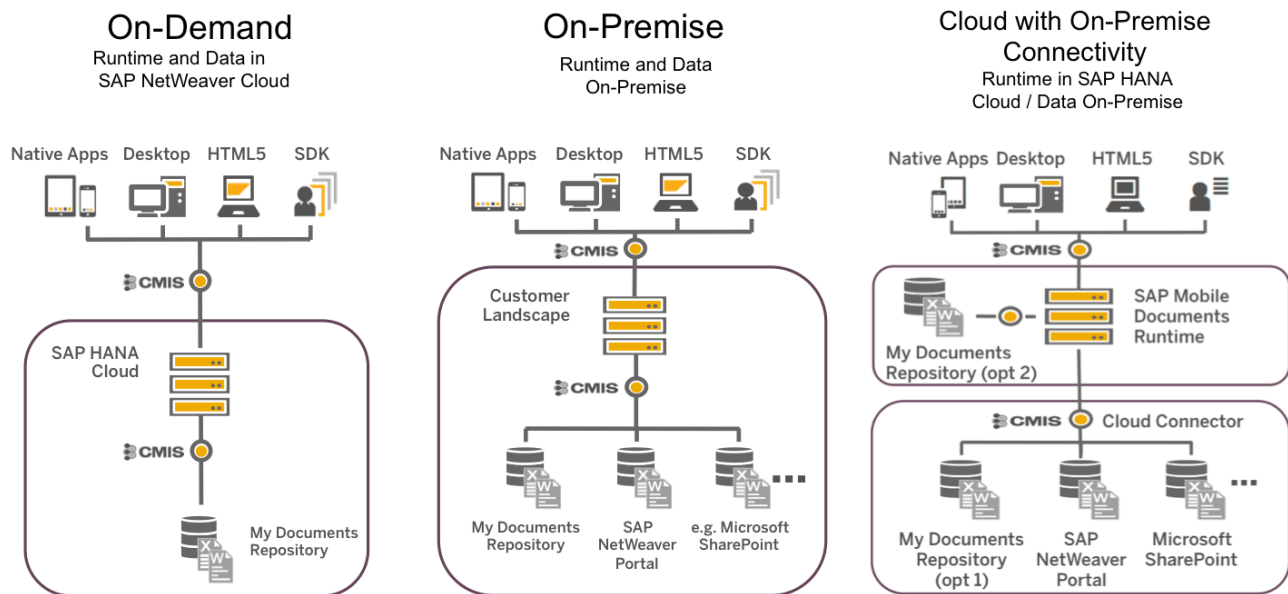
These materials are subject to change without notice. These materials are provided by SAP AG and its affiliated companies ("SAP Group") for informational purposes only, without representation or warranty of any kind, and SAP Group shall not be liable for errors or omissions with respect to the materials. The only warranties for SAP Group products and services are those that are set forth in the express warranty statements accompanying such products and services, if any. Nothing herein should be construed as constituting an additional warranty.



The purpose of this document is to give an overview of supported platforms and available clients for SAP Mobile Documents version 1.0 SP01.

## Deployment Options for SAP Mobile Documents 1.0 SP01

New in SP01: Cloud with on-premise connectivity allowing to run SAP Mobile Documents in the cloud with backend access utilizing the SAP HANA Cloud Connector.



## Supported SAP Platforms to run SAP Mobile Documents

SAP Mobile Documents On-Premise		SAP Mobile Documents in the Cloud	
<b>Version</b>	<b>SAP NW Java Usage Type EP</b>	<b>Version</b>	<b>SAP NetWeaver Cloud</b>
1.0 SP01	7.3 SP 09	1.0 SP01	Latest
	7.3 EHP 1 SP05		
	7.4		

## Supported Browsers

Firefox			Google Chrome		
Version	OS	Supported	Version	OS	Supported
10.0 ESR	Windows	Yes	24 and higher	Windows	Yes
	Linux	No		Linux	No
	OSX	No		OSX	No
17.0 ESR and higher	Windows	Yes			
	Linux	No			
	OSX	No			

Apple Safari			MS IE	
Version	OS	Supported	Version	Supported
4	Windows	No	IE 7	No
	OSX	No		
			IE 8	restricted
5.1 and higher	Windows	No		
	OSX	Yes	IE 9	Yes
			IE 10	Yes

## Supported Mobile Clients

New in SP01:  
Mobile Clients for Apple iPhone and Android Smart Phones.  
IOS 7 support for Apple devices.

### Apple iPad Client

Version	Supported
IOS 4	No
IOS 5	No
IOS 6	Yes
IOS 7	Yes

### Apple iPhone Client

Version	Supported
IOS 4	No
IOS 5	No
IOS 6	Yes
IOS 7	Yes

### Android Phone Client

Version	Supported
2.x	No
3.x	No
4.0 and higher	Yes

## Supported Native Clients

New in SP01: Windows 8 support.

Windows Client		Apple OSX Client	
Version	Supported	Version	Supported
Windows XP	No	OSX 10.6	No
Windows Vista	No	OSX 10.7	Yes
Windows 7	Yes	OSX 10.8	Yes
Windows 8 RT	No		
Windows 8	Yes		