

# SAP Product Road Map

## SAP BusinessObjects Lumira

(also includes SAP BusinessObjects Design Studio)

Road Map Revision: 2016.05.18

Customer



# Legal disclaimer

---

The information in this presentation is confidential and proprietary to SAP and may not be disclosed without the permission of SAP. This presentation is not subject to your license agreement or any other service or subscription agreement with SAP. SAP has no obligation to pursue any course of business outlined in this document or any related presentation, or to develop or release any functionality mentioned therein. This document, or any related presentation and SAP's strategy and possible future developments, products and or platforms directions and functionality are all subject to change and may be changed by SAP at any time for any reason without notice. The information in this document is not a commitment, promise or legal obligation to deliver any material, code or functionality. This document is provided without a warranty of any kind, either express or implied, including but not limited to, the implied warranties of merchantability, fitness for a particular purpose, or non-infringement. This document is for informational purposes and may not be incorporated into a contract. SAP assumes no responsibility for errors or omissions in this document, except if such damages were caused by SAP's willful misconduct or gross negligence.

All forward-looking statements are subject to various risks and uncertainties that could cause actual results to differ materially from expectations. Readers are cautioned not to place undue reliance on these forward-looking statements, which speak only as of their dates, and they should not be relied upon in making purchasing decisions.

# Introduction to product road maps

---

## Purpose

Product road maps are designed to support the product adoption planning activities of SAP customers. A product road map helps a customer match short term and long term goals with technology plans.

A product road map describes how the feature / function capabilities in an SAP product or technology are planned to progress over time, in general:

- Today = changes in the current release version
- Planned Innovations = changes planned in one or more upcoming development releases (up to 12-18 months).
- Future Direction = proposed themes for a product or technology beyond the planned releases

## Complementary resources

For a more general description of the business problems / processes being solved and supported by SAP, refer to Solution Road maps.

For more detailed technical information please refer to the Product Availability Matrix, Ramp-up Knowledge Transfer materials and product documentation.

# Table of contents

---

## Product Overview

- Product description
- Road map overview and major product updates

## Product Road Map

- Today
- Planned
- Future

## Appendix





# Product Overview

- Product description
- Road map overview and major product updates

# Two analytics development tracks



Provide new  
SaaS Analytics  
capabilities

## SAP Business Objects Cloud

All analytics capabilities in one product	Consumer-grade user experience	Embedded and standalone	High-performance, real-time platform
--	-----------------------------------	----------------------------	---

Software-as-a-Service in the Public Cloud



Continued investment  
in existing solutions

<p><b>Enterprise BI</b> SAP BusinessObjects BI Suite</p> <p><i>BI 4.2 Design Studio 1.6 SP2 Analysis Office 2.2</i></p>	<p><b>Agile Visualization</b> SAP BusinessObjects Lumira</p> <p><i>Lumira 1.31</i></p>	<p><b>Advanced Analytics</b> SAP Predictive Analytics</p> <p><i>Predictive Analytics 2.5</i></p>	<p><b>EPM</b> Ex. SAP Business Planning and Consolidation (BPC)</p> <p><i>BPC 10.1 NW SP08</i></p>	<p><b>GRC</b> Ex. SAP Risk Management</p> <p><i>Risk Management 10.1 SP11</i></p>
On-premise and/or Private Cloud Deployment Options				

# SAP BusinessObjects Lumira

For Trusted Data Discovery, Storytelling and Application Development

## Transform data

- Acquire data from corporate, personal and web sources
- Acquire data from custom sources with extensions
- Quickly cleanse, transform, combine and enrich data

## Visualize and discover insights

- Rich library of chart types
- Extend, embed and customize with open source D3 extensions
- Discover related insights and influencers
- Full online analysis (OLAP) support on SAP BW and SAP HANA

## Share beautiful stories

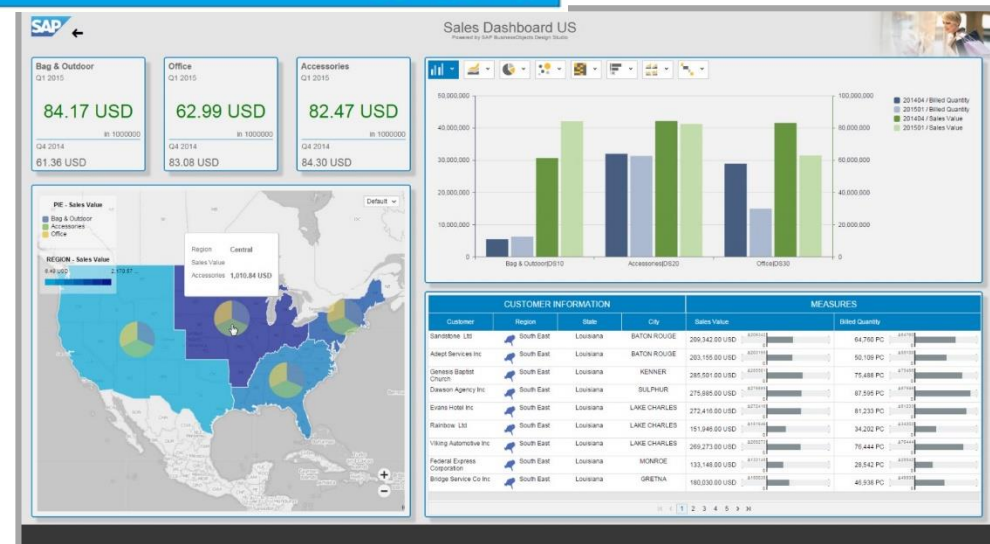
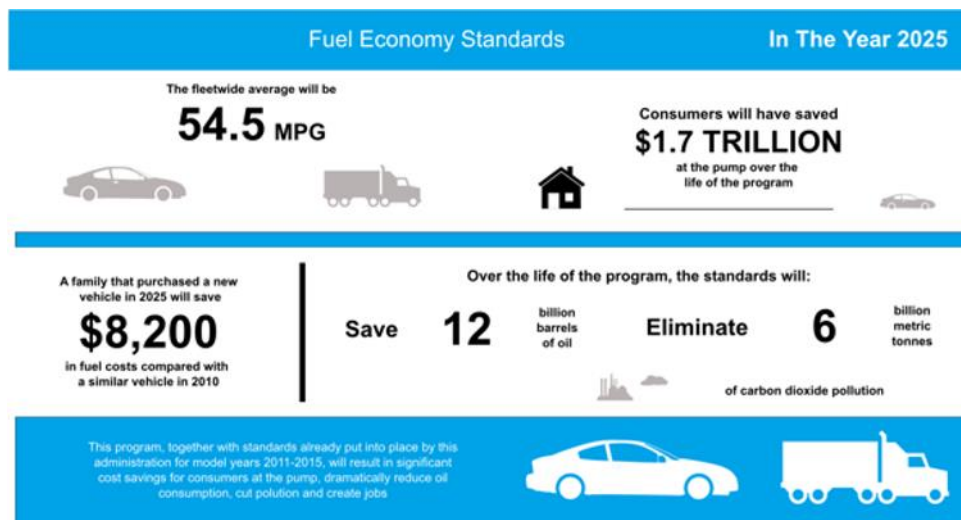
- Build engaging stories that highlight KPIs
- Share insights on mobile, web browser and desktop

## Design professional applications

- Build dashboard or self service applications for specific needs
- Extend SAP BusinessObjects Lumira dashboard with studio application design capabilities
- Develop planning applications on SAP BW-IP & SAP Business Planning and Consolidation 10.1

## Trusted data discovery

- Leverage trusted SAP BI platform and data security
- Single portal for both enterprise BI and Agile Visualization
- Scale to tens of thousands of users



# SAP BusinessObjects Lumira

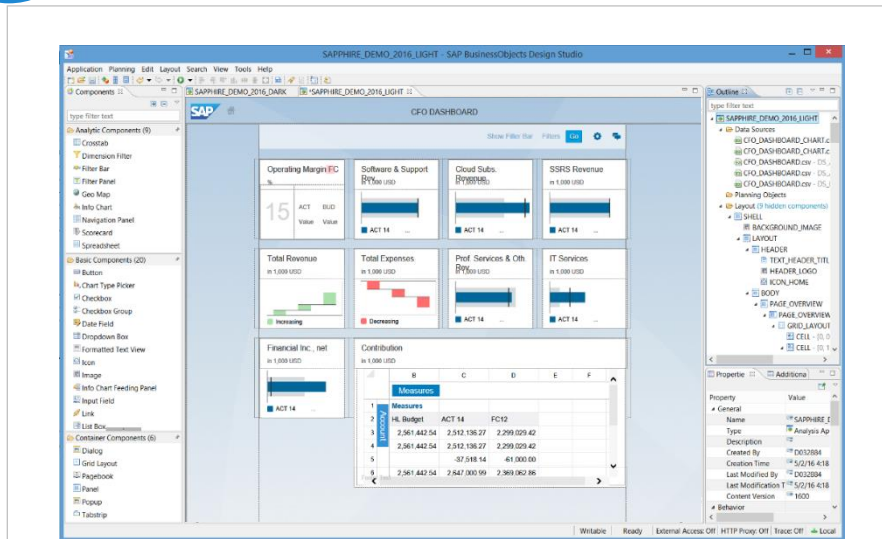
SAP Lumira & SAP BusinessObjects Design Studio merge into ONE product with TWO clients



Studio

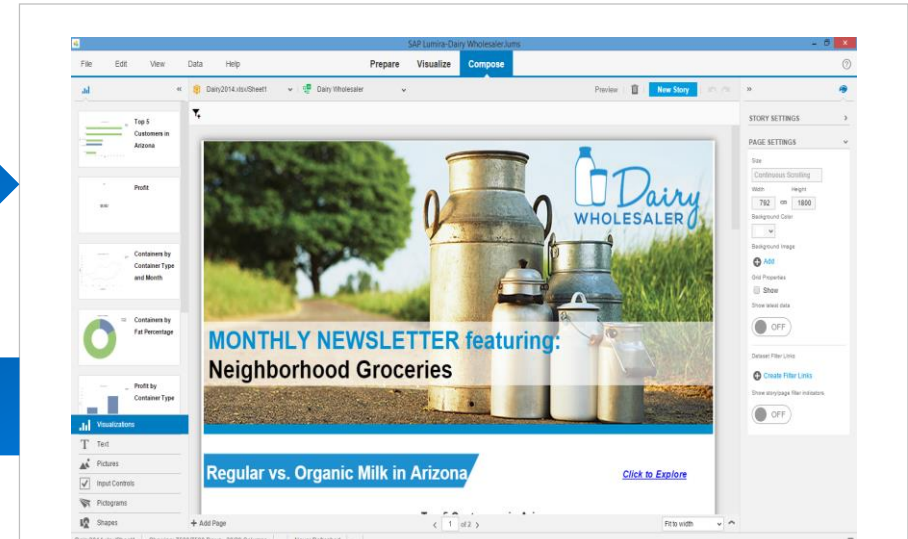


Desktop



Personalize Studio applications

Extend SAP Lumira stories



Common Technology

This is the current state of planning and may be changed by SAP at any time.



# SAP BusinessObjects Lumira

## Direction and Approach

---

### **SAP BusinessObjects Lumira 2.x plans to combine Lumira & Design Studio into one product:**

Deliver both clients on common technology stack

- Combine strength of both the clients
- Enable seamless inter-operability between the clients
- Deliver a revamped user experience
- One product for data discovery and application design

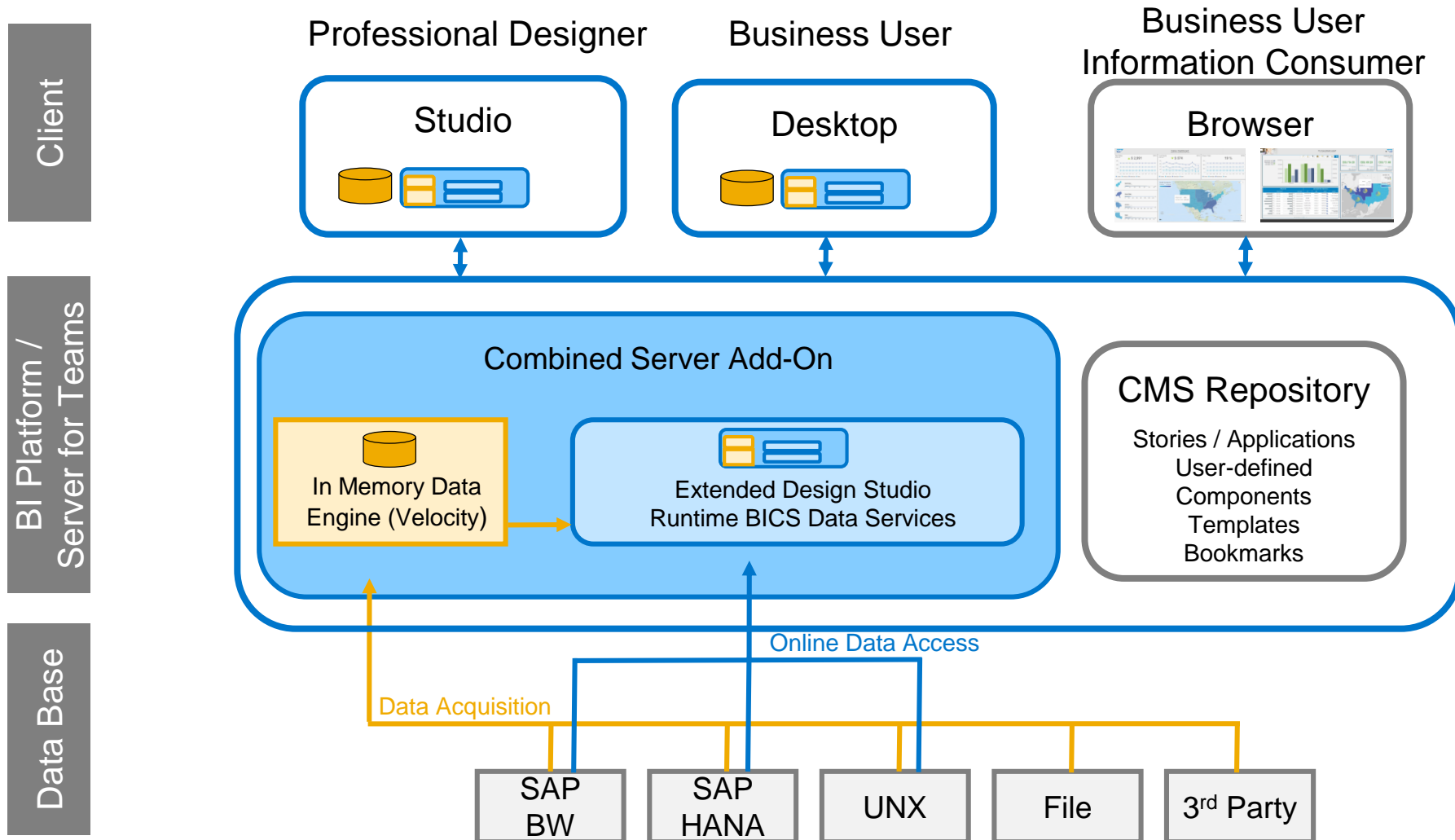
Respect existing customer investment

- Provide conversion from SAP Lumira 1.x and SAP BusinessObjects Design Studio 1.x documents and applications respectively
- Provide compatibility with 1.x SDK extensions of both SAP BusinessObjects Lumira and SAP BusinessObjects Design Studio respectively
- SAP Lumira 1.31 and SAP BusinessObjects Design Studio 1.6 remain in regular maintenance until end of 2017
- Existing licenses can be used/converted

**This is the current state of planning and may be changed by SAP at any time.**

# SAP BusinessObjects Lumira

## High-Level Architecture (Layers)



This is the current state of planning and may be changed by SAP at any time.

# SAP BusinessObjects Lumira

## Benefit

---

### Modern user experience for data discovery

- One document model, contextual actions, SAP Fiori-style look and feel

### Combined strengths of SAP Lumira and SAP BusinessObjects Design Studio

- SAP BW online, SAP HANA online, acquired data, extend, personalize

### Reduced TCO with one server add-on

- Deployment, upgrade, monitor, manage

### Integrates seamlessly with SAP technology

- SAP data source, BI platform and SAP Fiori launchpad

### Invest your time and effort on only one product

- Reuse, content, extensions

# SAP BusinessObjects Lumira

Planned convergence of the SAP BI client portfolio



**Discovery & Analysis**

Lumira Explorer  
Analysis for OLAP



**SAP BusinessObjects Lumira\***

Lumira desktop  
Lumira studio



**Dashboards & Applications**

Design Studio  
Dashboards  
BEx web



**Office Integration**

Analysis for Microsoft Office  
EPM Add-in  
Live Office  
BEx analyzer



SAP BusinessObjects Analysis, edition for Microsoft Office



**Reporting**

Crystal Reports  
Web Intelligence  
Desktop Intelligence



SAP Crystal Reports  
SAP BusinessObjects Web Intelligence



\* One Server Add-On for SAP BusinessObjects Lumira

This is the current state of planning and may be changed by SAP at any time.



# SAP BusinessObjects Lumira

## Product road map overview - key themes and capabilities

### Planned: BusinessObjects Lumira 2.x, ONE product TWO clients

#### Today

##### SAP Lumira 1.30 and 1.31

- Additional data source support: SAP S/4HANA
- Enhancements to SAP BW data access
- Extended support for analysis on SAP HANA
- User defined color palettes
- Offline consumption of stories on Mobile BI
- Extended support for scheduling
- Enhanced desktop and data source SSO support
- Enhanced OpenDocument support
- Extended support for platforms

##### SAP Design Studio 1.6 SP2

- Spreadsheet improvements
- Ad-hoc currency conversion
- Build virtual hierarchy of stacked dimensions
- New SAP Fiori components
- Info chart enhancements
- Designer: Simple calculations, UX enhancements (Resizable, moveable dialogs)
- Support of cascading filters for UNX and CSV data sources

#### Planned Innovations

##### Agility & insight for analysts

- Modernized user experience
- Improved Filter and Input Controls
- Simplified visualization experience
- Improved SAP HANA online analysis
- Support for SAP BW online analysis
- Export to PDF enhancements

##### Trust and scale

- Studio applications from acquired data in SAP BusinessObjects Lumira
- Extend SAP BusinessObjects Lumira stories with Studio functionalities
- Personalize Studio applications with SAP BusinessObjects Lumira
- Contextual export to SAP BusinessObjects Analysis, edition for Microsoft Office
- Schedule Studio applications based on acquired data
- Extended support for Enterprise deployment

##### Application design

- Additional SAP Fiori components
- Componentization and reusable custom components
- Robust bookmarks, LCM of bookmarks and folders

#### Future Direction

##### Agility & insight for analysts

- Data acquisition and manipulation on browser
- GUI for Freehand SQL connections
- Managed connection support for Freehand SQL
- Simplified and extended analysis features (Filter on measure, out of context calculations etc..)
- Enhanced story building experience with Templates
- Improved Mobile BI Offline experience
- Collaborate with commentary and annotation
- Variants support for personalization

##### Trust and scale

- Impact and Lineage analysis
- Publication & broadcasting
- Usage of SAP BusinessObjects Lumira dataset by any BI Client

##### Application design

- Improved components: scorecard, crosstab, spreadsheet and others
- Improved conditional formatting
- Continuous improvements

This is the current state of planning and may be changed by SAP at any time.



# Product Road Map

- Today
- Planned
- Future

# SAP BusinessObjects Lumira

## Product road map overview - key themes and capabilities

### Planned: BusinessObjects Lumira 2.x, ONE product TWO clients

#### Today

##### SAP Lumira 1.30 and 1.31

- Additional data source support: SAP S/4HANA
- Enhancements to SAP BW data access
- Extended support for analysis on SAP HANA
- User defined color palettes
- Offline consumption of stories on Mobile BI
- Extended support for scheduling
- Enhanced desktop and data source SSO support
- Enhanced OpenDocument support
- Extended support for platforms

##### SAP Design Studio 1.6 SP2

- Spreadsheet improvements
- Ad-hoc currency conversion
- Build virtual hierarchy of stacked dimensions
- New SAP Fiori components
- Info chart enhancements
- Designer: Simple calculations, UX enhancements (Resizable, moveable dialogs)
- Support of cascading filters for UNX and CSV data sources

#### Planned Innovations

##### Agility & insight for analysts

- Modernized user experience
- Improved Filter and Input Controls
- Simplified visualization experience
- Improved SAP HANA online analysis
- Support for SAP BW online analysis
- Export to PDF enhancements

##### Trust and scale

- Studio applications from acquired data in SAP BusinessObjects Lumira
- Extend SAP BusinessObjects Lumira stories with Studio functionalities
- Personalize Studio applications with SAP BusinessObjects Lumira
- Contextual export to SAP BusinessObjects Analysis, edition for Microsoft Office
- Schedule Studio applications based on acquired data
- Extended support for Enterprise deployment

##### Application design

- Additional SAP Fiori components
- Componentization and reusable custom components
- Robust bookmarks, LCM of bookmarks and folders

#### Future Direction

##### Agility & insight for analysts

- Data acquisition and manipulation on browser
- GUI for Freehand SQL connections
- Managed connection support for Freehand SQL
- Simplified and extended analysis features (Filter on measure, out of context calculations etc..)
- Enhanced story building experience with Templates
- Improved Mobile BI Offline experience
- Collaborate with commentary and annotation
- Variants support for personalization

##### Trust and scale

- Impact and Lineage analysis
- Publication & broadcasting
- Usage of SAP BusinessObjects Lumira dataset by any BI Client

##### Application design

- Improved components: scorecard, crosstab, spreadsheet and others
- Improved conditional formatting
- Continuous improvements

This is the current state of planning and may be changed by SAP at any time.

# SAP Lumira 1.30 / 1.31

## Feature Overview

### Agility for analysts

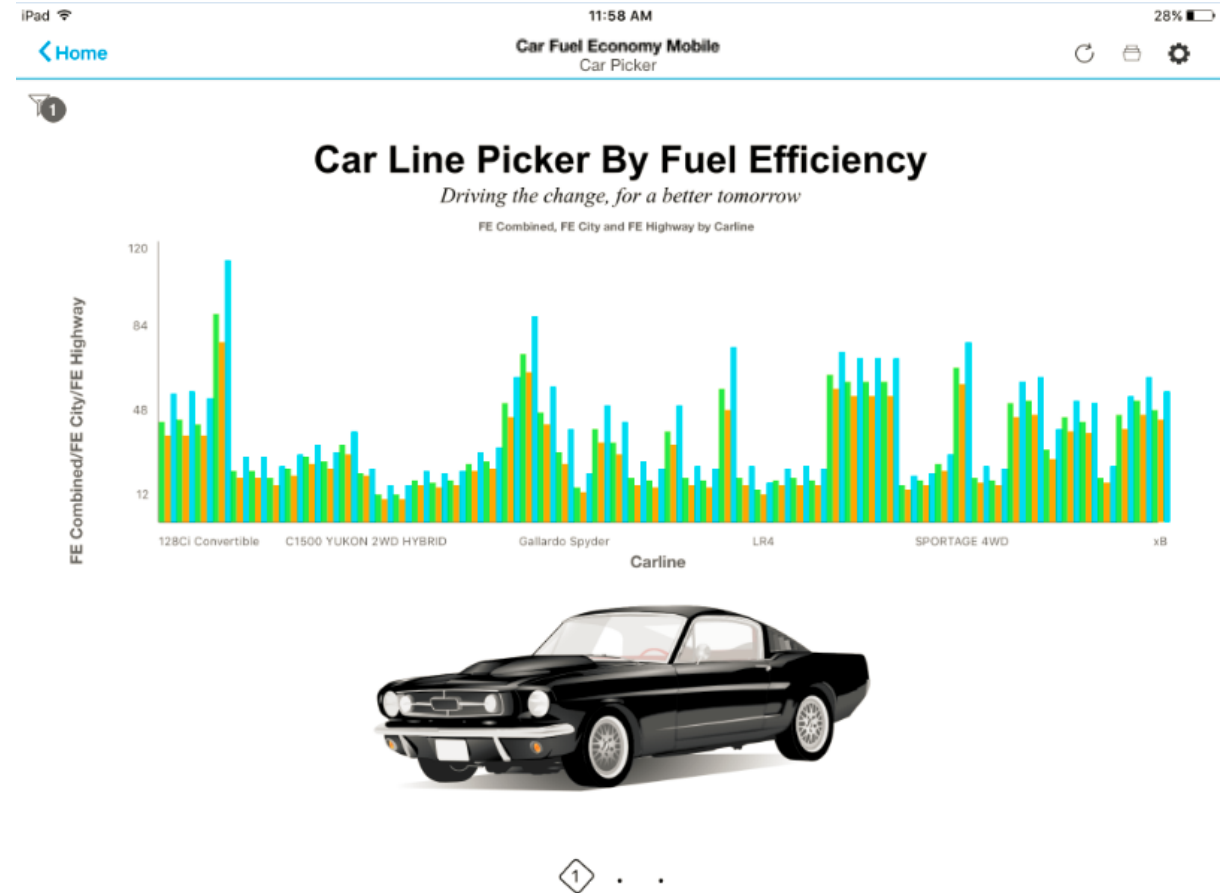
- Additional data source support: SAP S/4HANA
- SAP BW data acquisition: Acquisition Filters and Date Format
- Support for SAP HANA managed connections from BIP
- SAP HANA online end-to-end workflow on browser

### Instant insights

- User defined color palettes
- Time series analysis for additional chart types
- Offline consumption of stories on Mobile BI

### Trust and scale

- Extended support for Scheduling
- Extended SSO support with Universe Credential Mapping
- Enhanced OpenDocument support
- Extended support for platforms
- Authentication support for Hadoop





# SAP Lumira 1.30 / 1.31

## Acquire & Prepare data

SAP Lumira unleashes possibilities to explore data from more sources and perform incrementally more complex transformations on data in a trusted environment

### SAP S/4HANA

- Acquire data from SAP S/4HANA via SAP BW Analytic Engine with transient SAP BEX Queries

### SAP HANA

- Support for use of SAP HANA managed connections from SAP BI Platform on SAP Lumira desktop (for both Online and Offline connectivity)
- Enhancement in connection parameters for Multitenant Database Container (MDC)
- Create new SAP Lumira documents that access SAP HANA views using BI launchpad
- Support for SAP HANA SPS 11

### SAP BW

- Filter dimension values during acquisition in metadata explorer
- Assign the Date format from SAP BW
- Support for SAP BW 7.5

### Big Data

- Authentication support via Kerberos for Hadoop

The screenshot displays the 'SAP BW Data Acquisition Connector' interface. It is divided into two main sections: 'Select Measures and Dimensions from BW Dataset' and 'Create Your Lumira Dataset'.

**Select Measures and Dimensions from BW Dataset:**

- MEASURES:** A list of measures including 'Order Amount SUM', 'Order Quantity SUM', 'Product Price SUM', and 'Product Price (Float) SUM'.
- DIMENSIONS:** A list of dimensions including 'ABC Customer', 'ABC Country', 'ABC Region', 'ABC Order ID', 'ABC Product', 'ABC Shipment Courier', 'Shipment Date', and 'ABC Sales Person'.

**Create Your Lumira Dataset:**

- MEASURES:** A list of selected measures: 'Order Amount SUM' and 'Order Quantity SUM'.
- DIMENSIONS:** A list of selected dimensions: 'ABC Country', 'ABC Product Type', and 'Order Date'.

**Filter Dialog Box:**

The 'Filter' dialog box is open, showing a search for 'Product Type'. The list of values includes: Competition, Hybrid, Mountain, Kids, Gloves, Helmets, Locks, and Saddles. Below the list, there is a dropdown menu for 'Is in List' and an 'Apply' button.

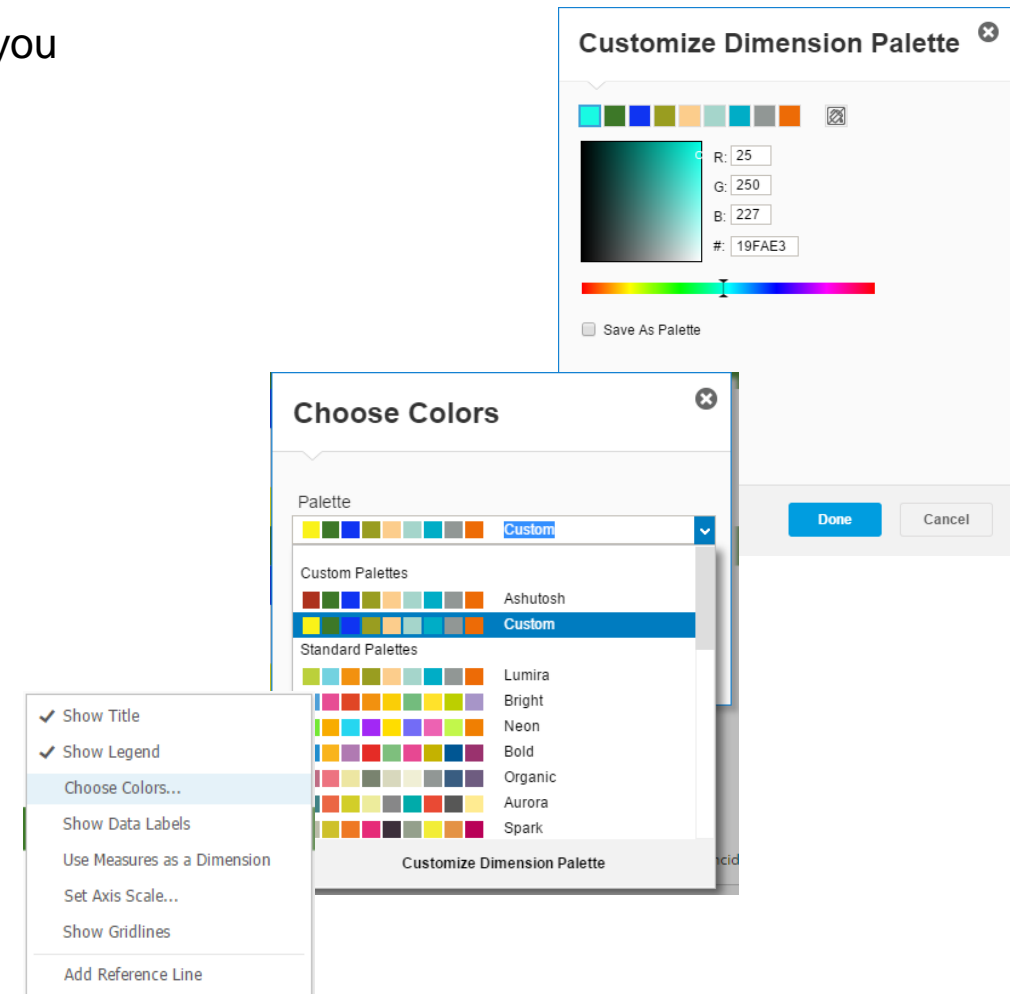
# SAP Lumira 1.30 / 1.31

## Visualize, explore and discover new insights

Enjoy the power and flexibility of SAP Lumira visualizations, helping you discover hidden insights and associative information

### Visualizations – Chart formatting and customizations

- Define Custom Color palettes
  - Categorical Palettes
  - Quantitative Palettes
- Support for Time series analysis on Bubble and Scatter charts



\*Support for creation and assignment of color palettes on Desktop only

# SAP Lumira 1.30 / 1.31

## Trusted platforms

Start your SAP Lumira deployment right away and scale up as your business grows

### SAP Lumira, server for the SAP BusinessObjects BI platform & SAP Lumira, server version for teams

- Enhancements to OpenDocument
- Improved responsiveness on rendering of SAP Lumira stories on browser

### Document Management

- Support for SAP HANA managed connections from BI platform (for both Online and Offline connectivity)
- Support for scheduling of SAP HANA Offline documents (Managed connections only)

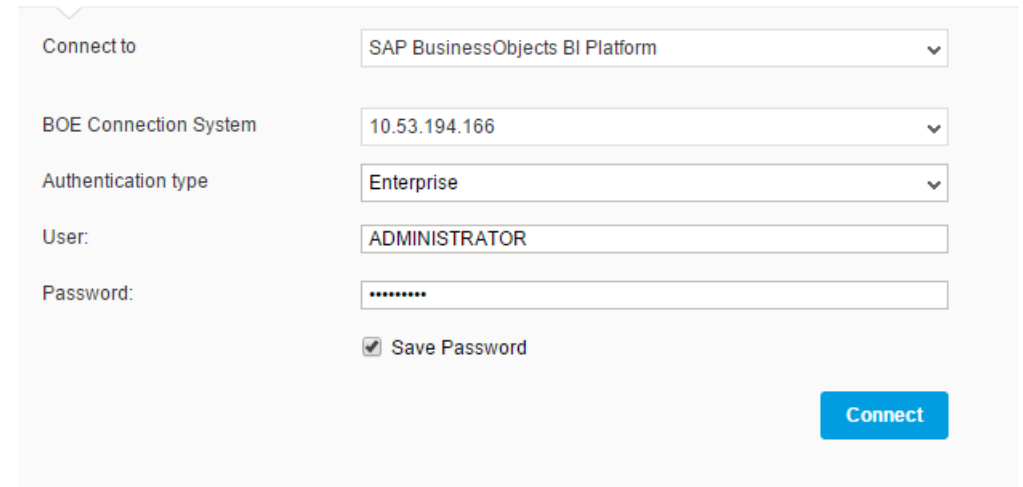
### Authentication Enhancements

- Support for Universe Credential Mapping
- User/Password Authentication to Hadoop

### Enterprise Readiness

- Support for SAP Lumira, server for the SAP BusinessObjects BI platform installation on Suse, RedHat
- Support for SAP Lumira web application deployment on SAP NetWeaver, WebSphere and Weblogic

### SAP HANA Data Acquisition Connector



Connect to	SAP BusinessObjects BI Platform
BOE Connection System	10.53.194.166
Authentication type	Enterprise
User:	ADMINISTRATOR
Password:	*****
	<input checked="" type="checkbox"/> Save Password
	<a href="#">Connect</a>

# SAP Lumira 1.30 / 1.31

## Extend the reach of Lumira

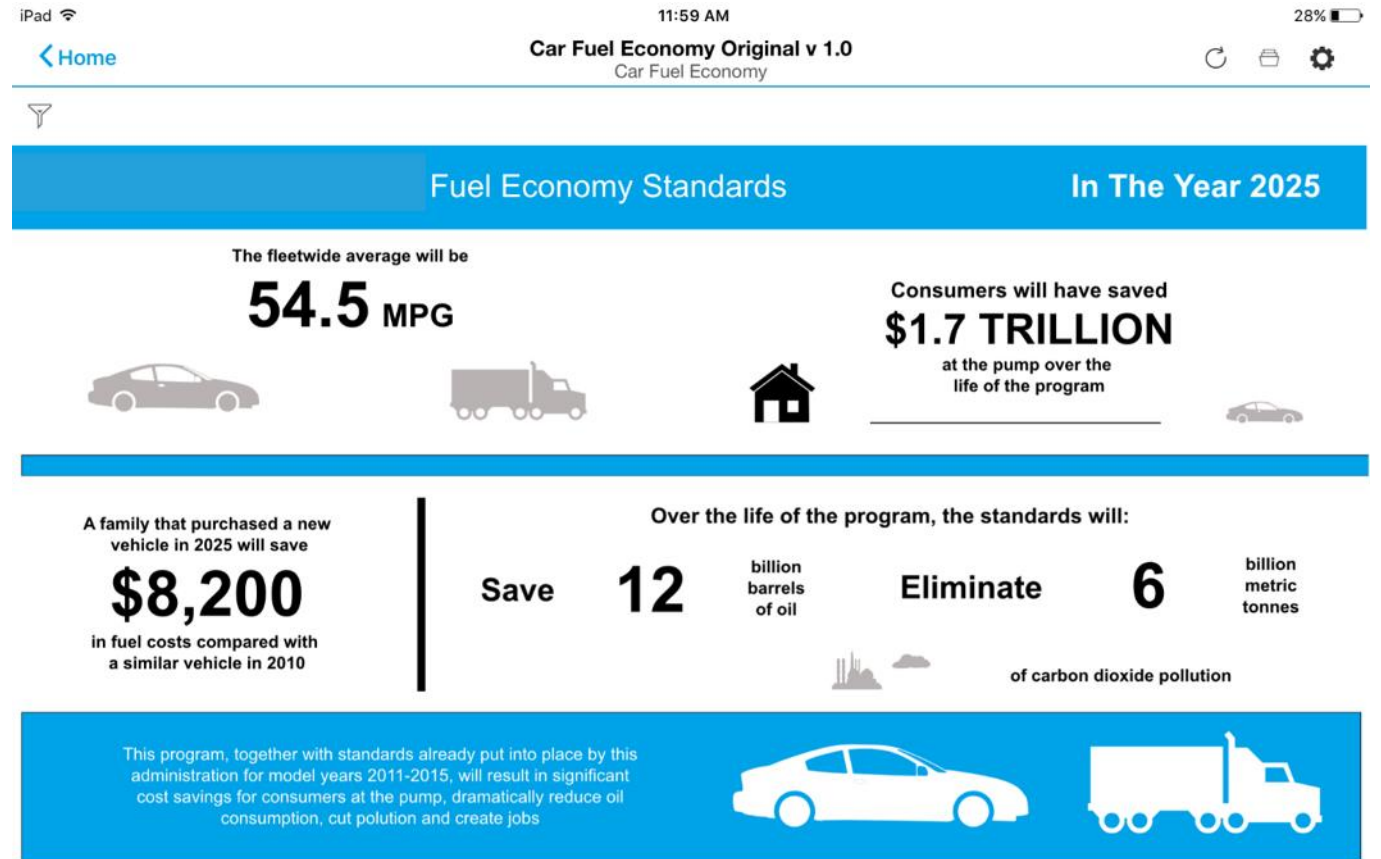
Extend, customize and embed SAP Lumira

### Embed SAP Lumira

- Embed stories with dynamic prompt values – SAP HANA, SAP BW and Universes
- Control visibility and action on stories – Story, Page, Bookmark
- Open in same window

### Improved experience for SAP Lumira on Mobile BI

- Download SAP Lumira stories on Mobile BI application for offline viewing
- Native rendering with iOS technology
- Device gesture support for interaction
- Support for offline filter and drill



WHITEHOUSE.GO<sup>1</sup>

1



# SAP BusinessObjects Design Studio Release 1.6 SP2

## Feature Overview

### End user

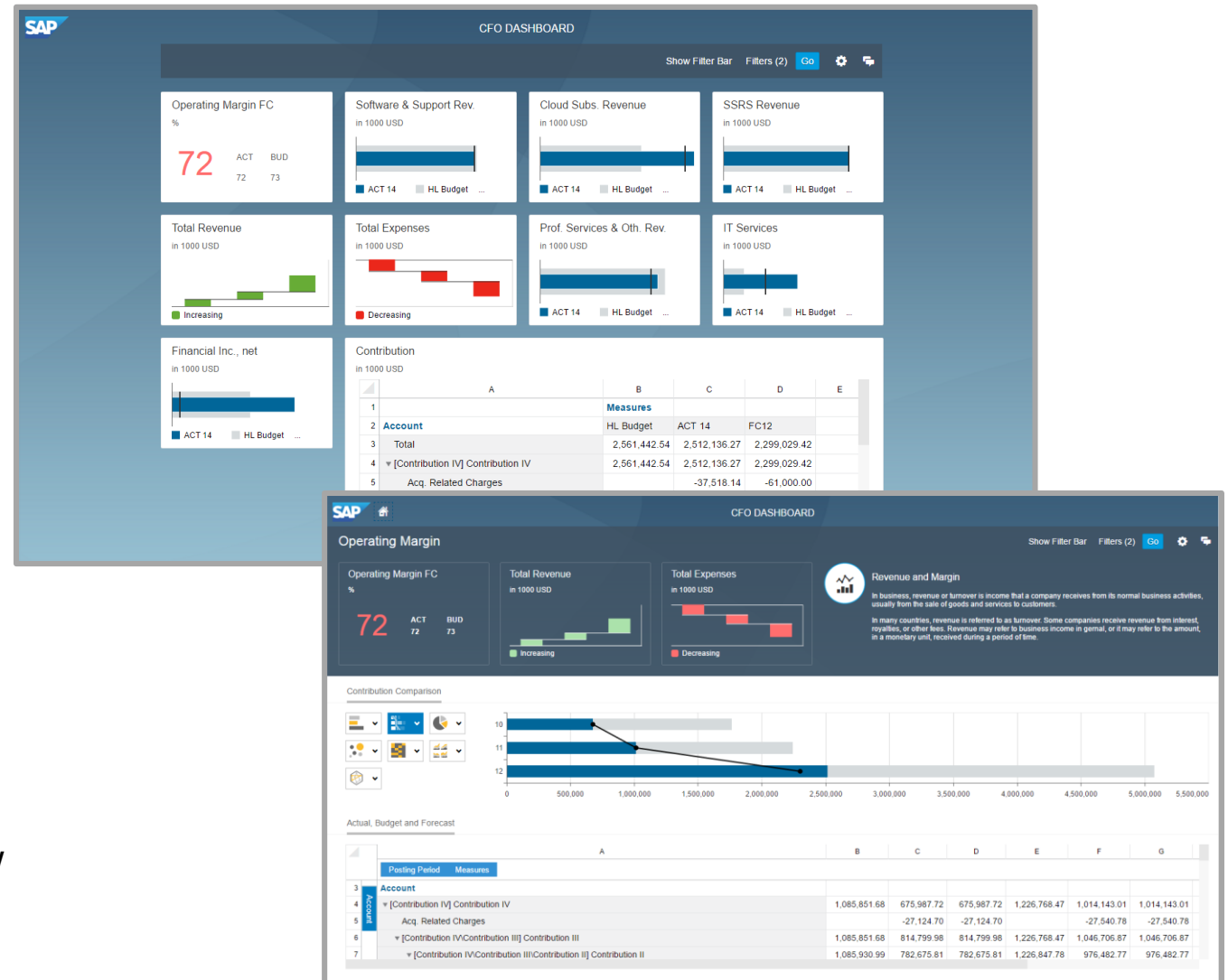
- Resizable, movable dialogs
- Display scaling factors in Info Chart
- Waterfall Info Charts

### Analyst

- Ad-hoc currency conversion
- Build virtual hierarchy of stacked dimensions
- Cascading Filter for Universe and CSV as Data Source

### Designer, developer, admin

- New standard components, e.g. Dialog, Filter Bar, Link, Multi-Line Text Input, Switch, Progress Bar (SAP Fiori Library)
- Info Chart Enhancements
- Initial View Editor: Simple Calculations
- Designer UI Enhancement: Compact Palette View

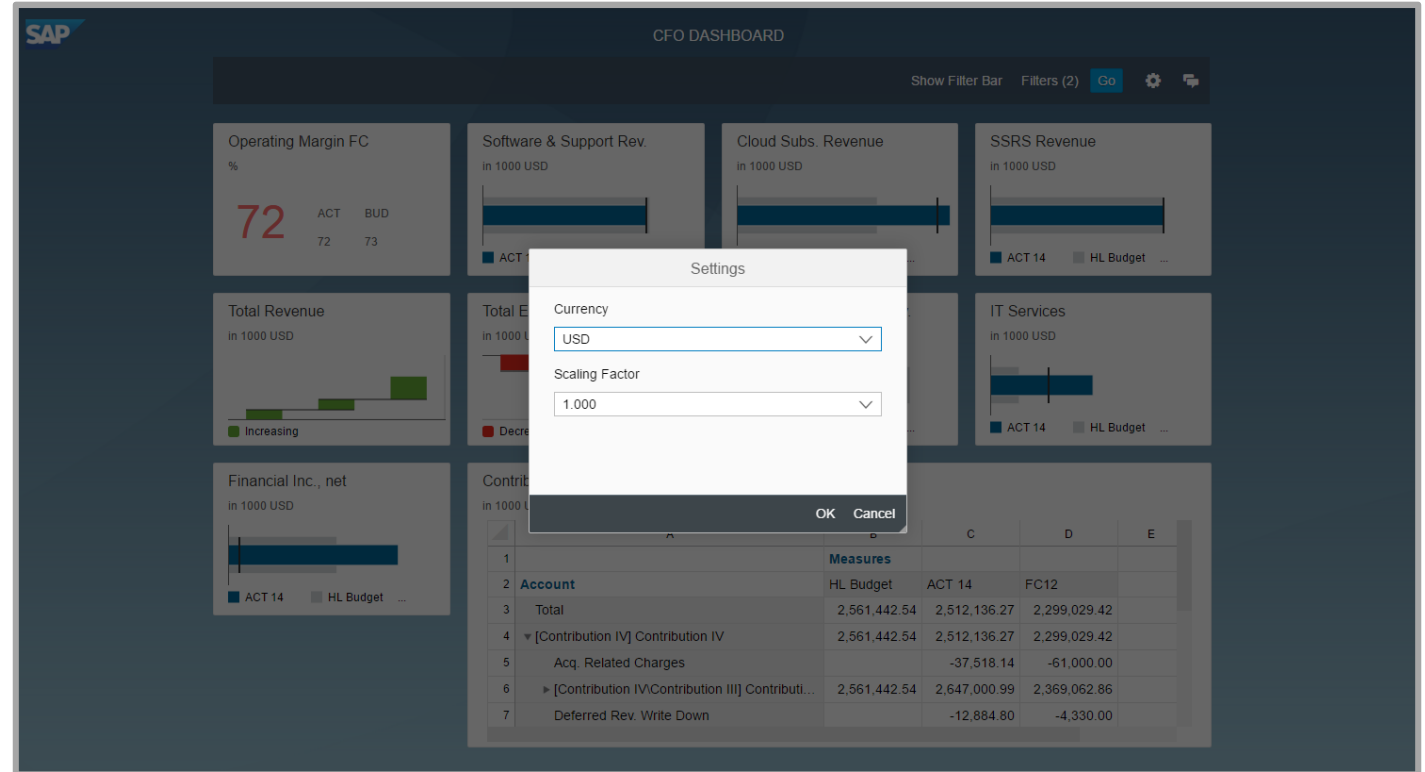
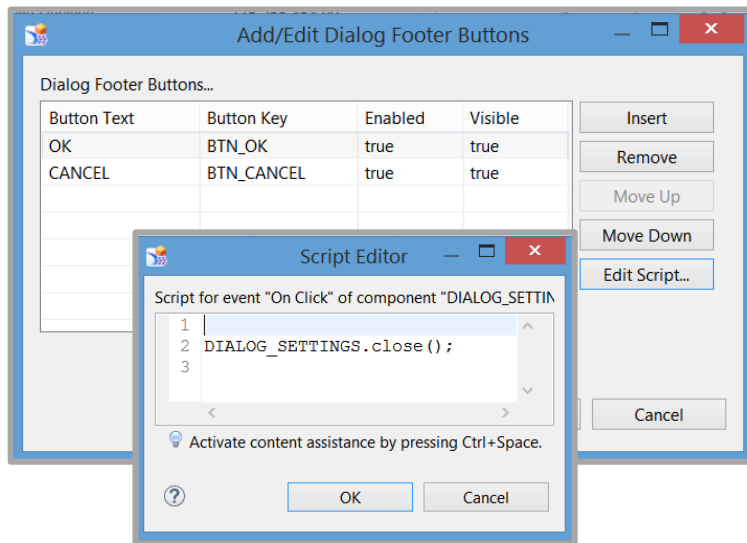


# SAP BusinessObjects Design Studio 1.6 SP2

## Dialog

### Resizable, movable Dialog

- New component available in SAP Fiori library
- Container component
- Free-defined buttons for dialog footer
- Movable, resizable and full screen maintained in property sheet



# SAP BusinessObjects Design Studio 1.6 SP2

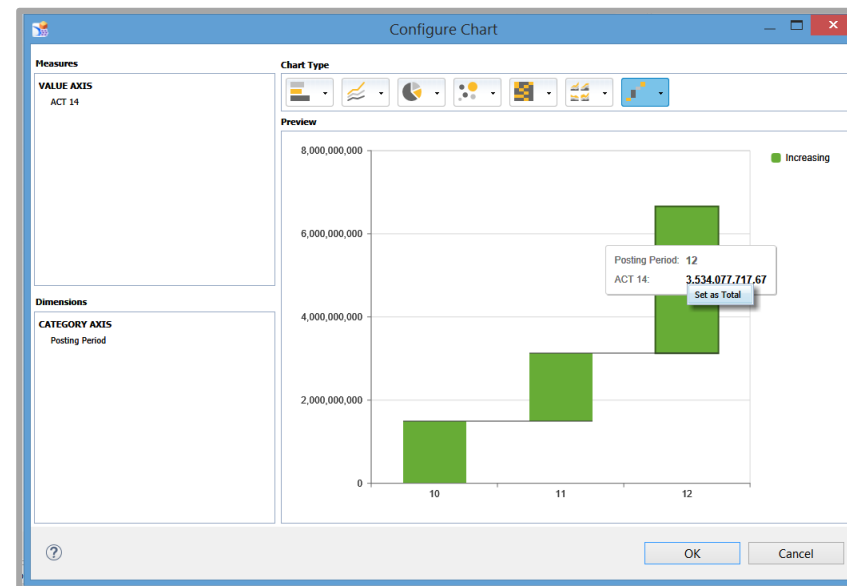
## Info Chart Enhancements

### Displaying Scaling Factors in Info Chart

- Showing data label including scaling factor with Tooltips

### Waterfall Info Chart

- New chart type
- Semantic coloring (e.g. Negative, Positive and Total)
- Configurable connection line
- “Set as Total” possible in design time



# SAP BusinessObjects Design Studio 1.6 SP2

## Ad-hoc Currency Conversion

### Ad-hoc Currency Conversion

- New API for opening currency conversion dialog
- Conversion based on target currency and conversion type defined in SAP BW backend
- Can be added as custom entry in context menu

Demo App DS 1.6SP2

Show Filter Bar Filters Go

Plant	Product Category	Net Value stat curr	Open order quantity
		EUR	PC
Calgary	Mobile Devices	775,255,154.00	2,37
	<b>Result</b>		<b>2,37</b>
Chicago	Monitors		2,33
	<b>Result</b>		<b>2,33</b>
Frankfurt	Monitors		1,89
	Notebooks		2,37
	<b>Result</b>	<b>1,88,894,224.00</b>	<b>4,26</b>
Manchester	Mobile Devices	775,160,336.00	2,37
	<b>Result</b>	<b>775,160,336.00</b>	<b>2,37</b>
	Monitors	191,645,993.00	52
Munich	Notebooks	776,618,980.00	2,37
	<b>Result</b>	<b>968,264,973.00</b>	<b>2,90</b>
<b>Overall Result</b>		<b>4,674,811,295.00</b>	<b>14,25</b>

Bar Chart Legend:

- Mobile Devices / N...
- Mobile Devices / O...
- Mobile Devices / O...
- Monitors / Net Valu...
- Monitors / Open ord...
- Monitors / Open ord...
- Notebooks / Net Val...
- Notebooks / Open o...
- Notebooks / Open o...

Powered by SAP DESIGN STUDIO

**Currency Conversion**

Target Currency:

Currency Conversion Type:

OK Cancel

# SAP BusinessObjects Design Studio 1.6 SP2

## Compact Display Hierarchy

### Compact Display Hierarchy (Virtual hierarchy of stacked dimensions)

- Standard entry within context menu
- Available in common and SAP Fiori library
- Displays a virtual hierarchy of dimensions

Company code	Plant	Product Category	Sold-to Party	Net Value stat curr
				EUR
IDES AG Ger			Becker AG	166,601,526.00
			<b>Result</b>	<b>166,601,526.00</b>
			Becker Berlin	179,110,683.00
			<b>Result</b>	<b>179,110,683.00</b>
				<b>179,110,683.00</b>
			Becker Berlin	149,795,216.00
			<b>Result</b>	<b>149,795,216.00</b>
				<b>149,795,216.00</b>
			Carbor GmbH	177,231,288.00
			<b>Result</b>	<b>177,231,288.00</b>
IDES France			Becker Berlin	191,645,993.00
			<b>Result</b>	<b>191,645,993.00</b>
			Lampen-Markt GmbH	177,369,472.00
			<b>Result</b>	<b>177,369,472.00</b>
				<b>369,015,465.00</b>
				<b>1,041,754,178.00</b>
			DelBont Industries	168,133,971.00
			Infix Co.	4,525,259.00
			<b>Result</b>	<b>172,659,230.00</b>
				<b>172,659,230.00</b>
		DelBont Industries	175,628,707.00	
		<b>Result</b>	<b>175,628,707.00</b>	
			<b>175,628,707.00</b>	
		Superplus	171,457,971.00	
		<b>Result</b>	<b>171,457,971.00</b>	
		Minerva Industries	40,066,501.00	
		Superplus	130,228,194.00	



Company code	Net Value stat curr
	EUR
<b>Overall Result</b>	<b>4,674,811,295.00</b>
[-] IDES AG Germany	1,041,754,178.00
[-] Calgary	166,601,526.00
[-] Mobile Devices	166,601,526.00
[-] Becker AG	166,601,526.00
[+] Chicago	179,110,683.00
[+] Frankfurt	149,795,216.00
[+] Manchester	177,231,288.00
[+] Munich	369,015,465.00
[+] IDES France	1,031,585,356.00
[+] IDES UK	528,802,482.00
[+] IDES US Inc.	2,072,669,279.00

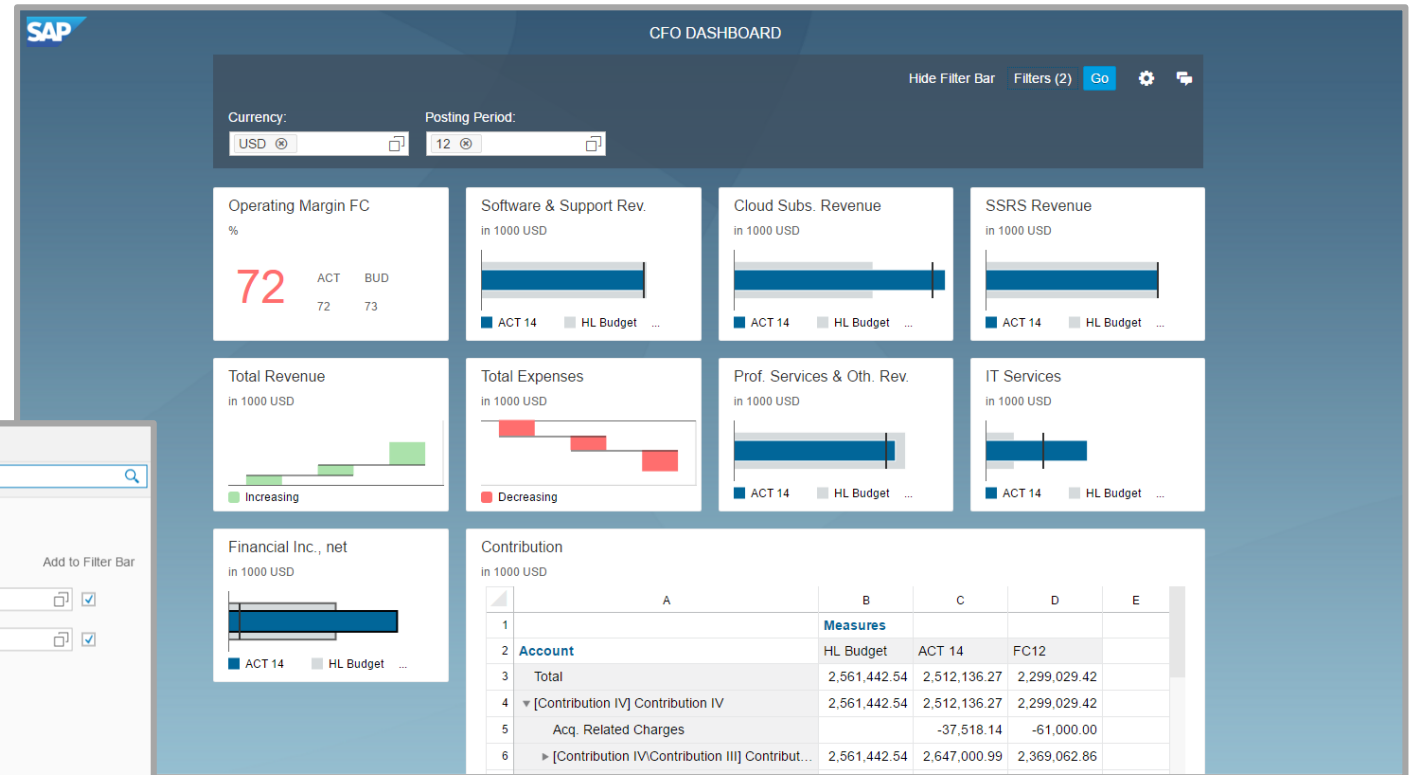
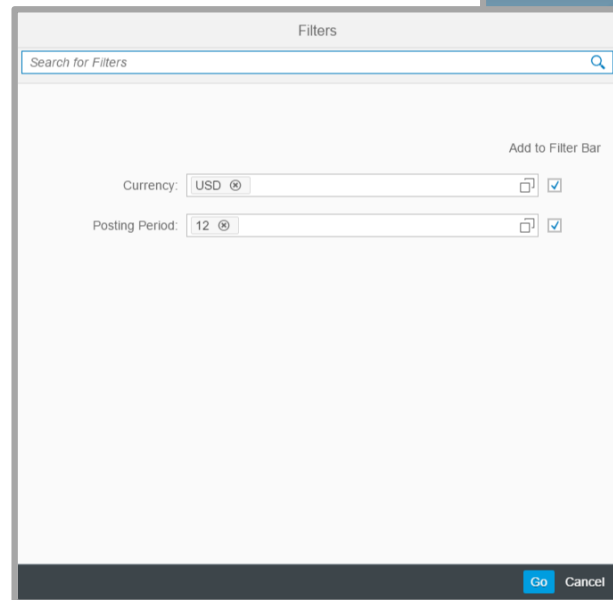


# SAP BusinessObjects Design Studio 1.6 SP2

## Filter Bar

### Filter Bar

- New component in SAP Fiori library
- End user can select dimensions filters to show and set filter value
- Toggle button to show or hide filter bar
- Defining “On Toggle” event via API



# SAP BusinessObjects Design Studio 1.6 SP2

## Other New Components in SAP Fiori library

### Link

- Component for http link
- Target web address is automatically opened in another window

### Text Area

- Enables user to enter multi-line texts

### Progress Indicator

- Represents percentage value

### Segmented Button

- Shows a button group in segmented way

### Switch

- Has on/off, blank and accept/reject mode

Other new components in Design Studio 1.6SP2

Link:  
[Google Search](#)

Text Area

Design Studio 1.6 SP2 are delivering the following new components with SAP UI5 main Library:

- Movable and resizable dialog
- Filter Bar
- Link
- Text Area
- Progress Indicator
- Segmented Button
- Switch Button

Progress Indicator

Segmented Button

Switch Button

Powered by SAP BusinessObjects Design Studio

# SAP BusinessObjects Design Studio 1.6 SP2

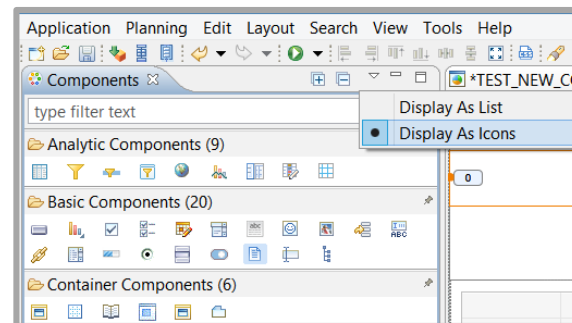
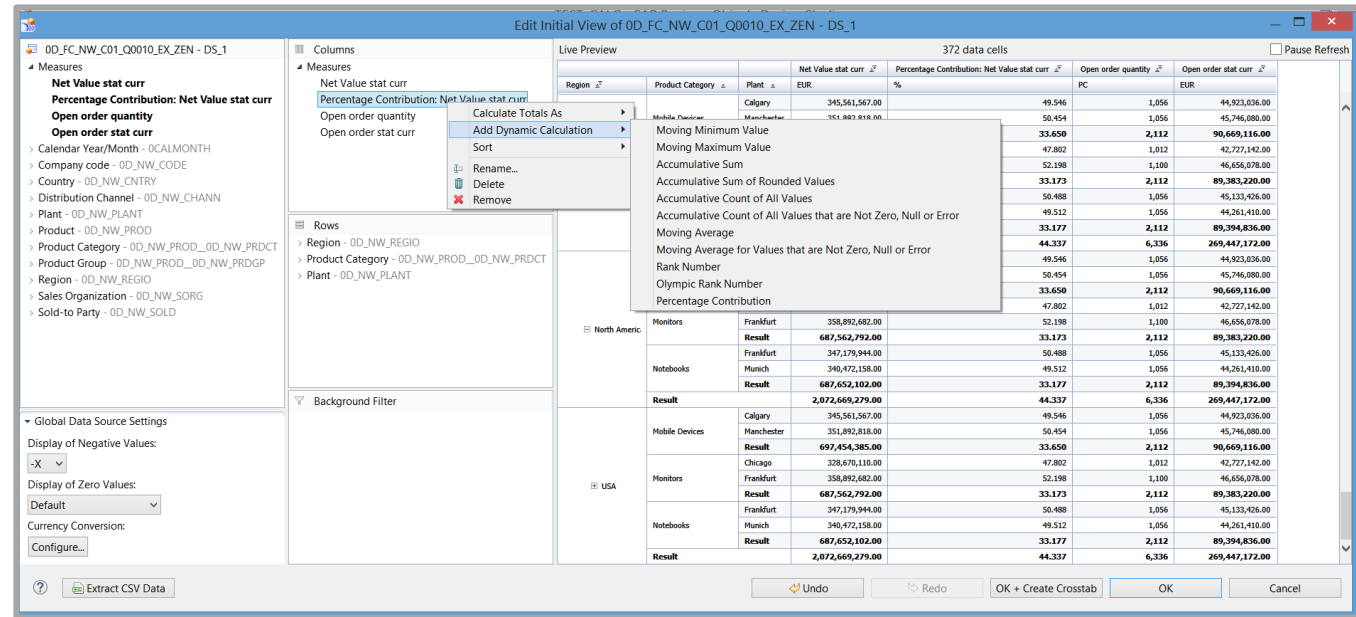
## Design Experience Improvements

### Compact Palette View

- New View for designer
- All components are displayed as icons

### Dynamic Calculation in Initial View Editor

- Available now in initial view editor if Data Source is SAP BW
- Add dynamic calculations of key figures via context menu



# SAP BusinessObjects Lumira

## Product road map overview - key themes and capabilities

### Planned: BusinessObjects Lumira 2.x, ONE product TWO clients

#### Today

##### SAP Lumira 1.30 and 1.31

- Additional data source support: SAP S/4HANA
- Enhancements to SAP BW data access
- Extended support for analysis on SAP HANA
- User defined color palettes
- Offline consumption of stories on Mobile BI
- Extended support for scheduling
- Enhanced desktop and data source SSO support
- Enhanced OpenDocument support
- Extended support for platforms

##### SAP Design Studio 1.6 SP2

- Spreadsheet improvements
- Ad-hoc currency conversion
- Build virtual hierarchy of stacked dimensions
- New SAP Fiori components
- Info chart enhancements
- Designer: Simple calculations, UX enhancements (Resizable, moveable dialogs)
- Support of cascading filters for UNX and CSV data sources

#### Planned Innovations

##### Agility & insight for analysts

- Modernized user experience
- Improved Filter and Input Controls
- Simplified visualization experience
- Improved SAP HANA online analysis
- Support for SAP BW online analysis
- Export to PDF enhancements

##### Trust and scale

- Studio applications from acquired data in SAP BusinessObjects Lumira
- Extend SAP BusinessObjects Lumira stories with Studio functionalities
- Personalize Studio applications with SAP BusinessObjects Lumira
- Contextual export to SAP BusinessObjects Analysis, edition for Microsoft Office
- Schedule Studio applications based on acquired data
- Extended support for Enterprise deployment

##### Application design

- Additional SAP Fiori components
- Componentization and reusable custom components
- Robust bookmarks, LCM of bookmarks and folders

#### Future Direction

##### Agility & insight for analysts

- Data acquisition and manipulation on browser
- GUI for Freehand SQL connections
- Managed connection support for Freehand SQL
- Simplified and extended analysis features (Filter on measure, out of context calculations etc..)
- Enhanced story building experience with Templates
- Improved Mobile BI Offline experience
- Collaborate with commentary and annotation
- Variants support for personalization

##### Trust and scale

- Impact and Lineage analysis
- Publication & broadcasting
- Usage of SAP BusinessObjects Lumira dataset by any BI Client

##### Application design

- Improved components: scorecard, crosstab, spreadsheet and others
- Improved conditional formatting
- Continuous improvements

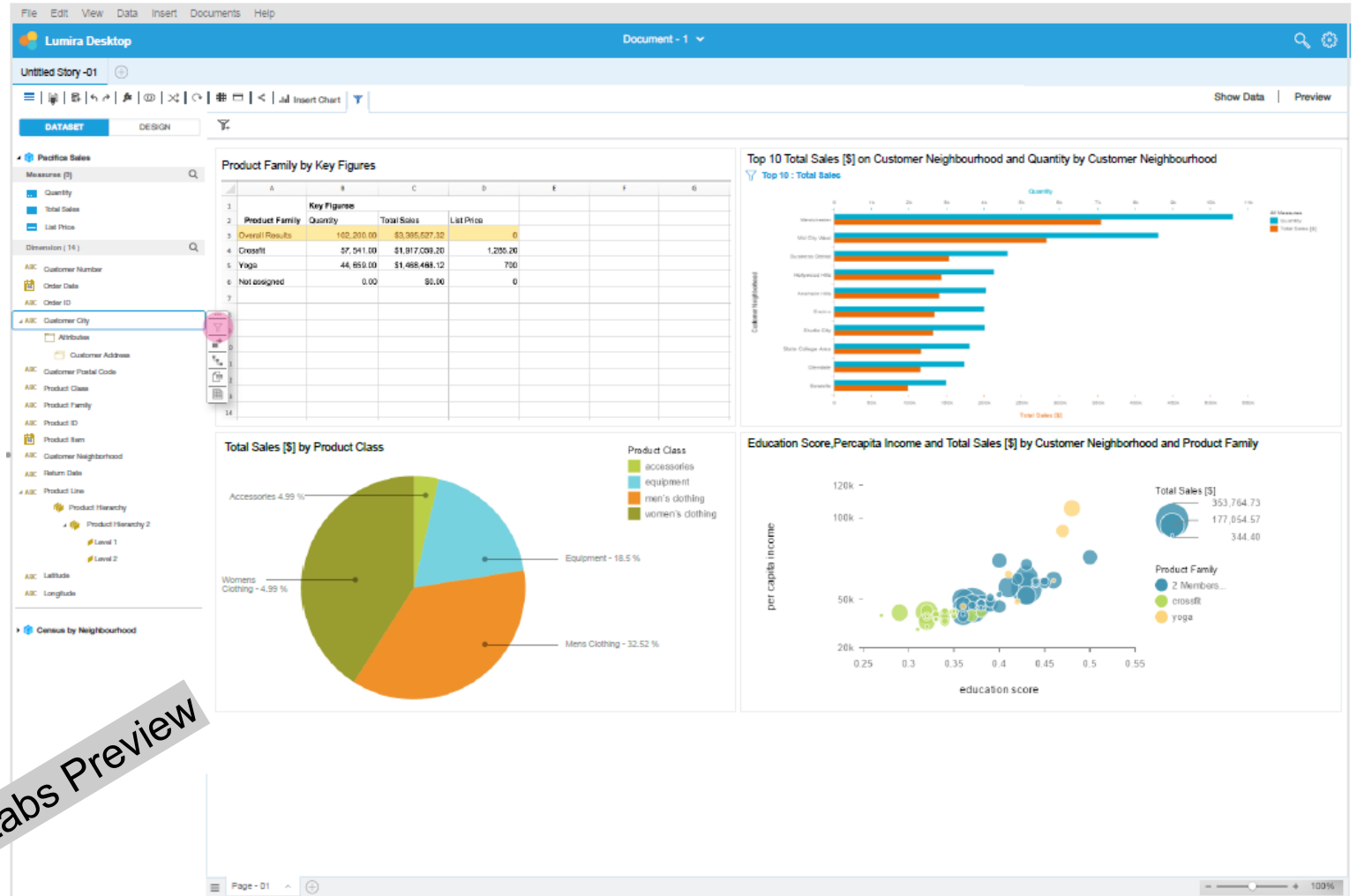
This is the current state of planning and may be changed by SAP at any time.

# SAP BusinessObjects Lumira

## Agility and Insight for analysts

### Modernized user experience

- Improved first hour experience
- Single canvas, consolidated visualize and compose rooms
- Improved input control and filtering experience
- Simplified visualization and analysis experience
- SAP Fiori-style look and feel



SAP Labs Preview

This is the current state of planning and may be changed by SAP at any time.



# SAP BusinessObjects Lumira

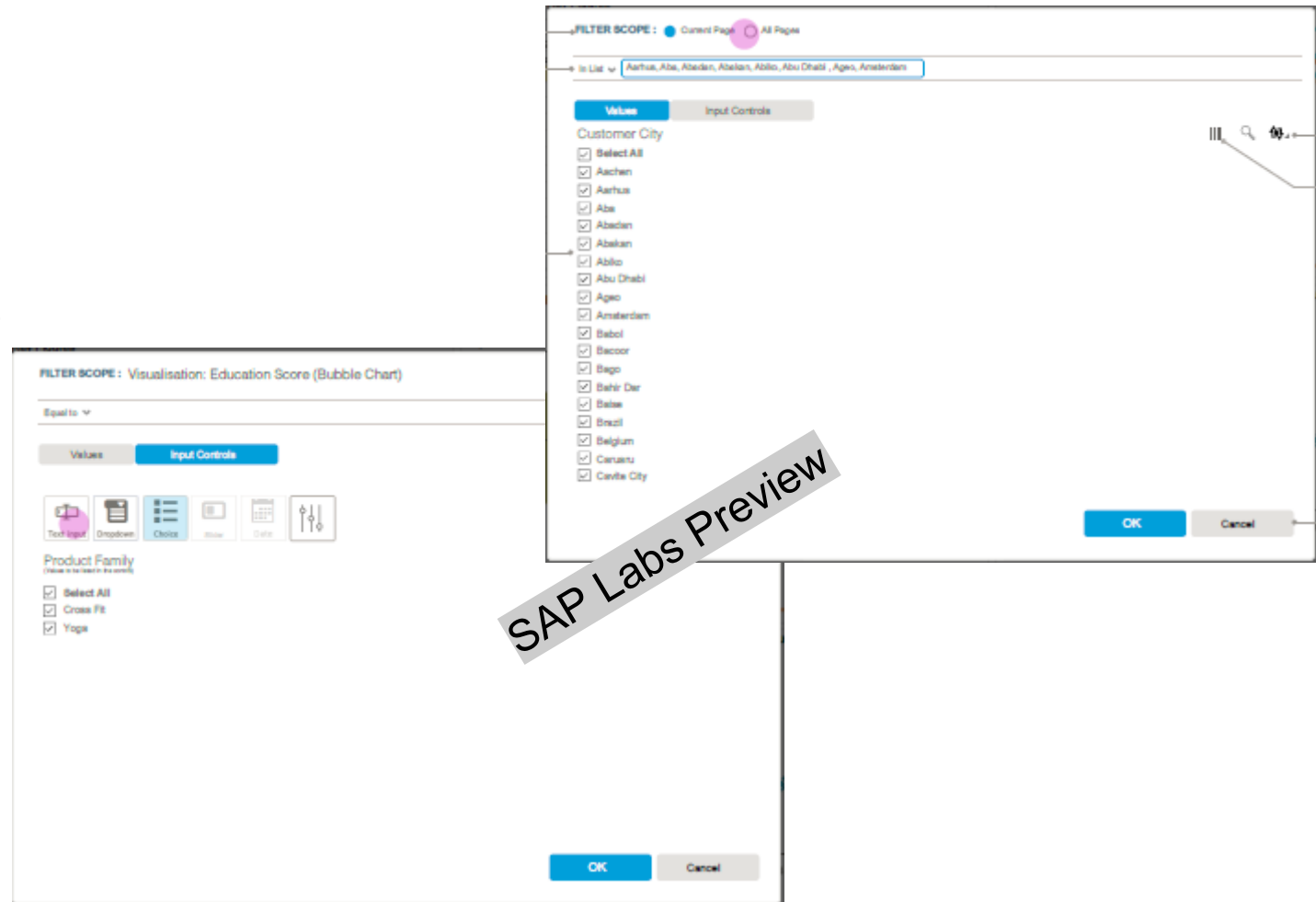
## Agility and Insight for analysts

### Improved input control and filtering experience

- Define filter scope from the context (dataset, story, page, or visualization)
- Support for filter on multiple visualizations
- Input Control an extension of filter to pass the values
- Support for additional control types
- Support for cascading filters
- Ability to customize controls

### Enhancements to PDF export

- Export to PDF enhancements, Select pages to print, improve PDF quality



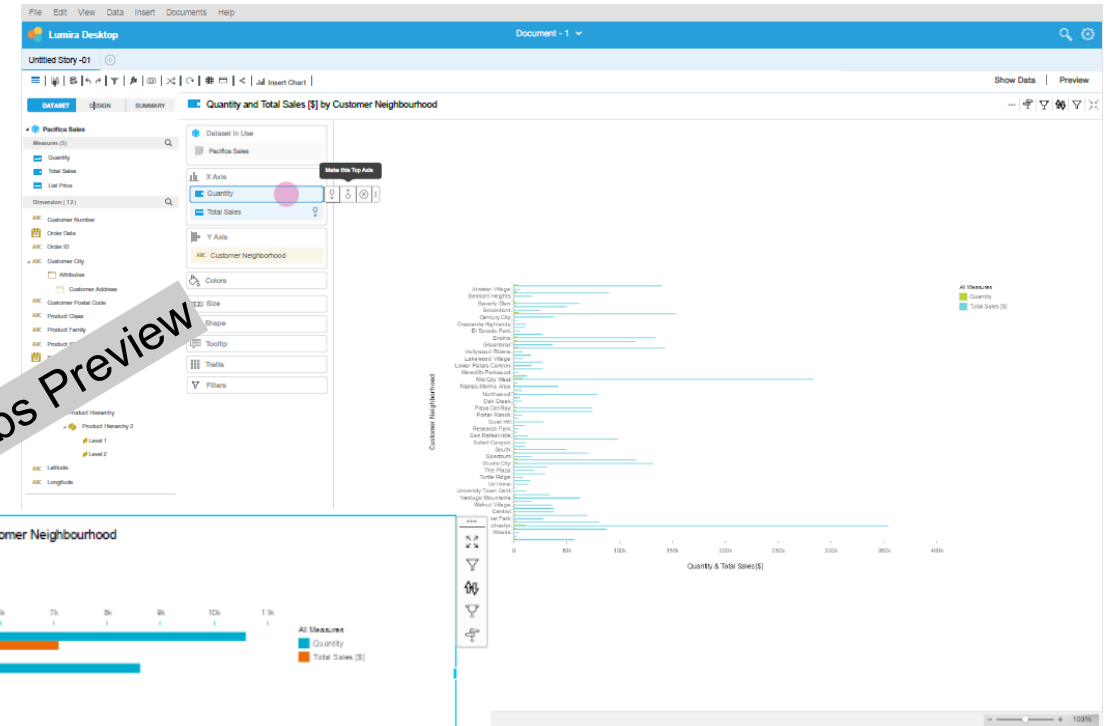
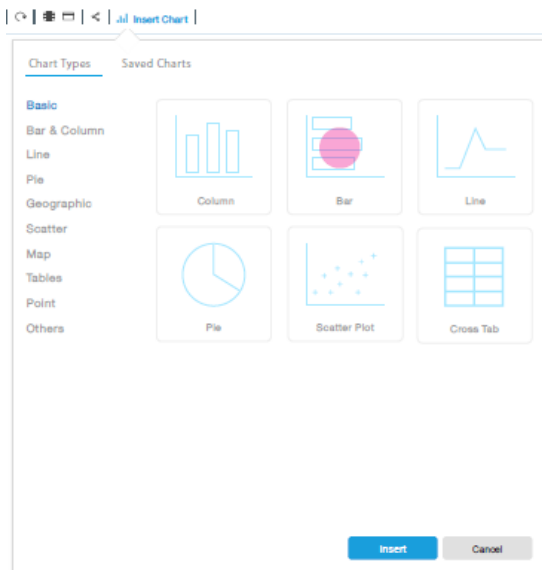
This is the current state of planning and may be changed by SAP at any time.

# SAP BusinessObjects Lumira

## Agility and Insight for analysts

### Simplified visualization and analysis experience

- Simplified visualization experience with reduced chart family
- Basic (chart picker) and saved (visualization gallery) charts in one place
- Simplified chart formatting and customization with contextual actions
- Consistent formatting and customization capabilities across chart types



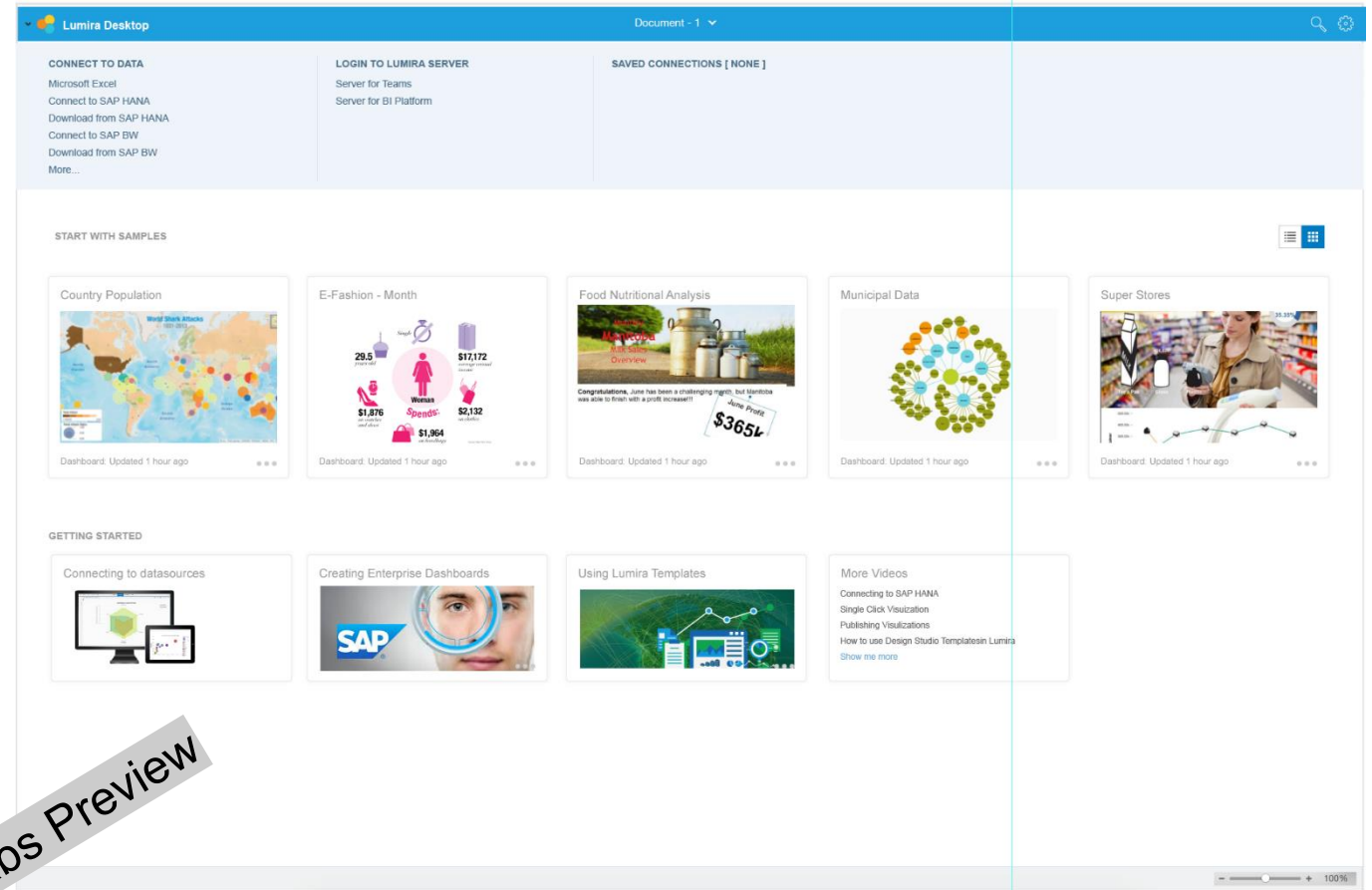
This is the current state of planning and may be changed by SAP at any time.

# SAP BusinessObjects Lumira

## Agility and Insight for analysts

### Extended and Improved Online analysis

- Support for SAP BW online access and analysis in Lumira
- Enhanced support for SAP HANA online analysis with better connectivity to SAP HANA



SAP Labs Preview

This is the current state of planning and may be changed by SAP at any time.

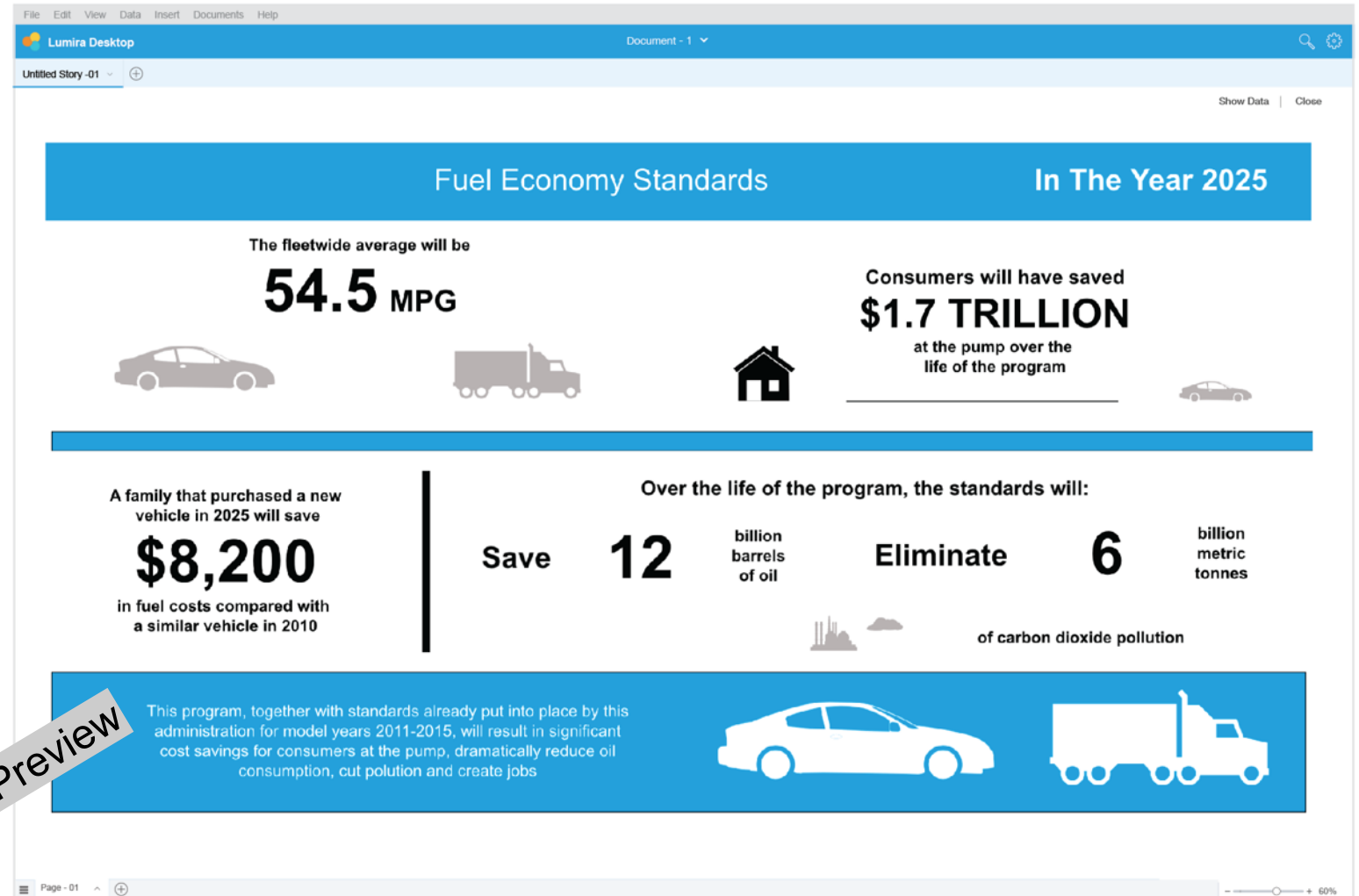
# SAP BusinessObjects Lumira

## Trust and Scale

### Enables Business users and IT to work together

Support for acquired data in SAP BusinessObjects Lumira as a source in Studio application

- Open and extend SAP BusinessObjects Lumira stories in Studio with additional functionalities ex. Scripting
- Open and analyze Studio applications in SAP BusinessObjects Lumira
- Contextual export to SAP BusinessObjects Analysis, edition for Microsoft Office: export data with all user-defined selections and drill-paths and continue analysis in SAP BusinessObjects Analysis, edition for Microsoft Office



SAP Labs Preview

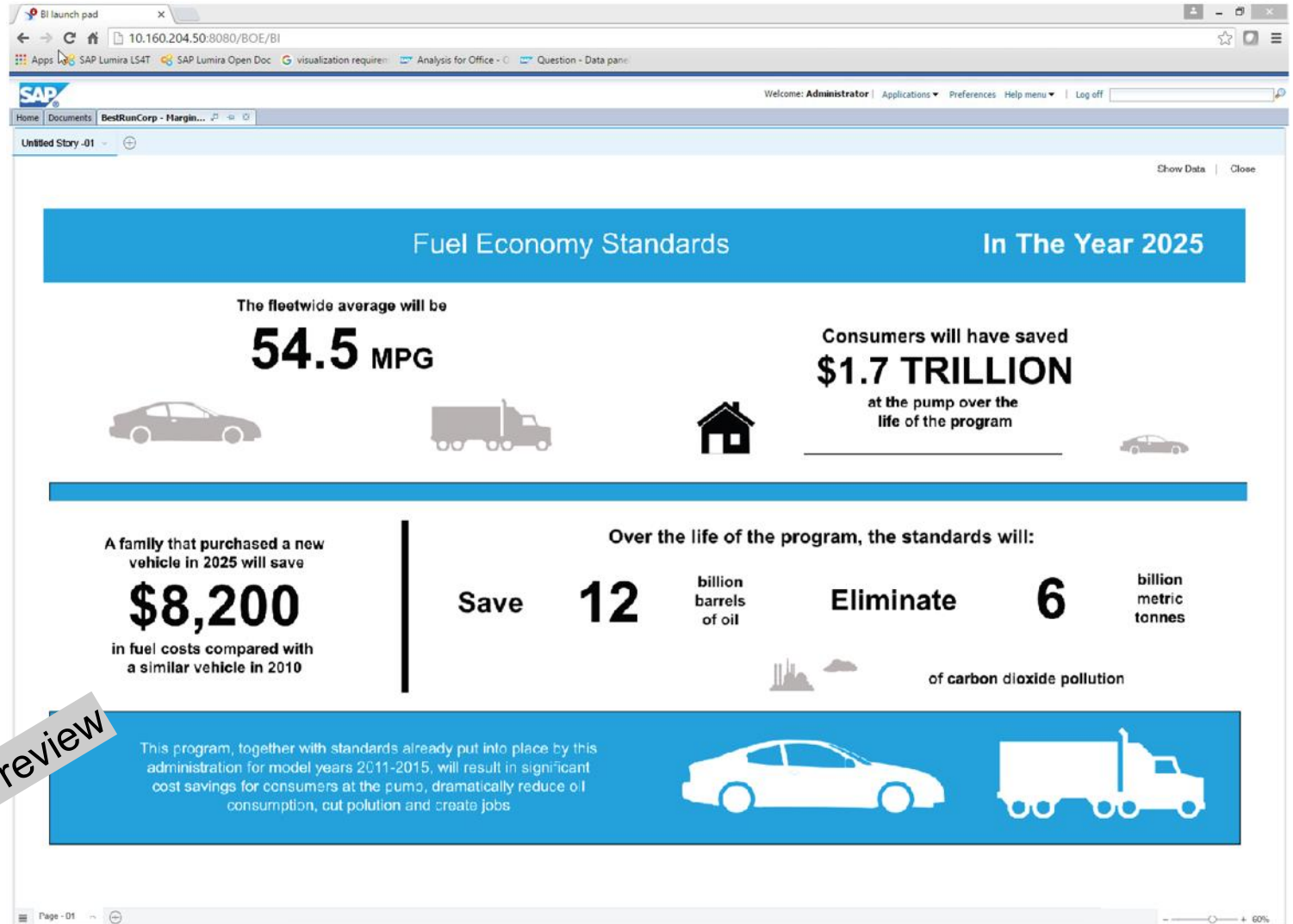
This is the current state of planning and may be changed by SAP at any time.

# SAP BusinessObjects Lumira

## Agility and Insight for analysts

### Extended support for Enterprise deployment

- Schedule Studio application created on acquired dataset from SAP BusinessObjects Lumira
- Scheduled instances in Studio application destination format
- Promotion management and Folders support for Bookmarks
- Support for additional Operating System, Application Servers and Languages



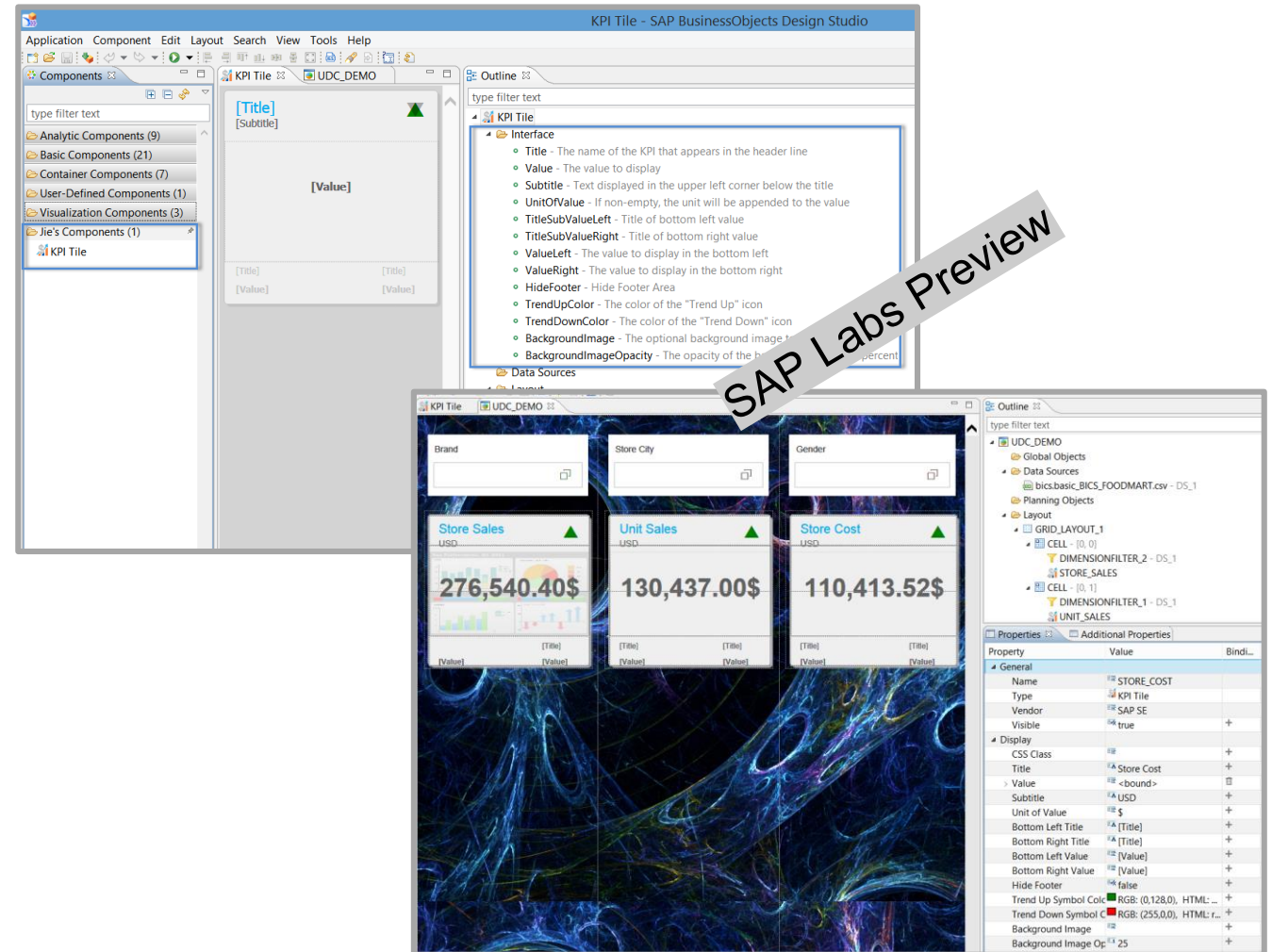


# SAP BusinessObjects Lumira

## Application design

### User-defined components

- Designers can create own components without low-level JavaScript programming, similar to app development (formatting by drag & drop of standard components, logic definition by data binding and scripting)
- Usable like any other standard component: properties, methods, events (interface)
- Re-usable across applications, stored independent from the application on the BI platform
- Based on a clean interface concept
- Can be used to define global components (header, footer, toolbar, global script pool)
- Can also be used to decompose complex applications into smaller, better manageable parts



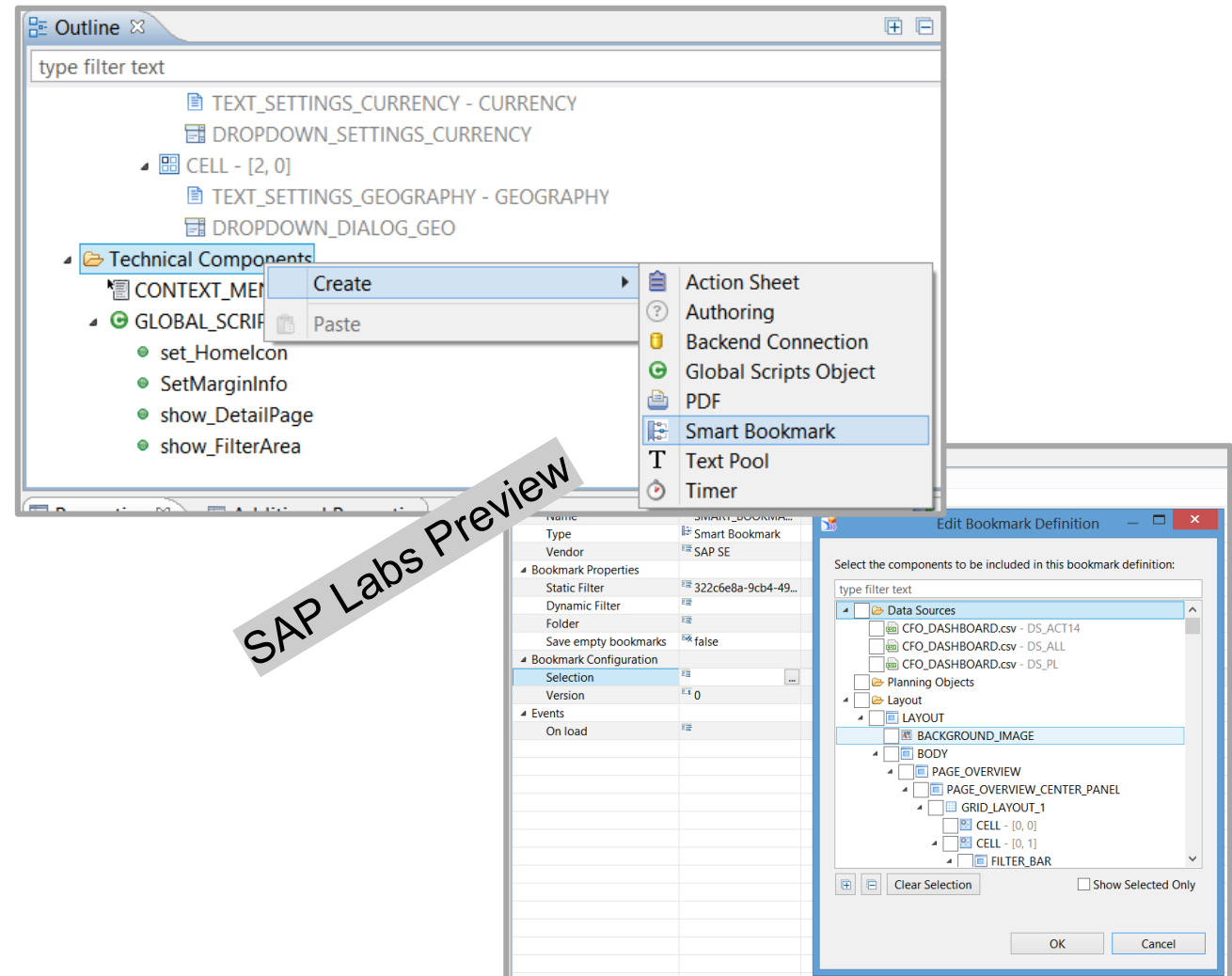
This is the current state of planning and may be changed by SAP at any time.

# SAP BusinessObjects Lumira

## Application design

### Reworked Bookmark Concept

- Designer configures what is captured in a bookmark (e.g. selection of data sources, global script variables, components)
- Increasing robustness of bookmarks against application UI changes
- Bookmark configuration as a technical component in design time
- Promotion management support of bookmarks and folders



This is the current state of planning and may be changed by SAP at any time.

# SAP BusinessObjects Lumira

## Product road map overview - key themes and capabilities

### Planned: BusinessObjects Lumira 2.x, ONE product TWO clients

#### Today

##### SAP Lumira 1.30 and 1.31

- Additional data source support: SAP S/4HANA
- Enhancements to SAP BW data access
- Extended support for analysis on SAP HANA
- User defined color palettes
- Offline consumption of stories on Mobile BI
- Extended support for scheduling
- Enhanced desktop and data source SSO support
- Enhanced OpenDocument support
- Extended support for platforms

##### SAP Design Studio 1.6 SP2

- Spreadsheet improvements
- Ad-hoc currency conversion
- Build virtual hierarchy of stacked dimensions
- New SAP Fiori components
- Info chart enhancements
- Designer: Simple calculations, UX enhancements (Resizable, moveable dialogs)
- Support of cascading filters for UNX and CSV data sources

#### Planned Innovations

##### Agility & insight for analysts

- Modernized user experience
- Improved Filter and Input Controls
- Simplified visualization experience
- Improved SAP HANA online analysis
- Support for SAP BW online analysis
- Export to PDF enhancements

##### Trust and scale

- Studio applications from acquired data in SAP BusinessObjects Lumira
- Extend SAP BusinessObjects Lumira stories with Studio functionalities
- Personalize Studio applications with SAP BusinessObjects Lumira
- Contextual export to SAP BusinessObjects Analysis, edition for Microsoft Office
- Schedule Studio applications based on acquired data
- Extended support for Enterprise deployment

##### Application design

- Additional SAP Fiori components
- Componentization and reusable custom components
- Robust bookmarks, LCM of bookmarks and folders

#### Future Direction

##### Agility & insight for analysts

- Data acquisition and manipulation on browser
- GUI for Freehand SQL connections
- Managed connection support for Freehand SQL
- Simplified and extended analysis features (Filter on measure, out of context calculations etc..)
- Enhanced story building experience with Templates
- Improved Mobile BI Offline experience
- Collaborate with commentary and annotation
- Variants support for personalization

##### Trust and scale

- Impact and Lineage analysis
- Publication & broadcasting
- Usage of SAP BusinessObjects Lumira dataset by any BI Client

##### Application design

- Improved components: scorecard, crosstab, spreadsheet and others
- Improved conditional formatting
- Continuous improvements

This is the current state of planning and may be changed by SAP at any time.

# SAP BusinessObjects Lumira

## Future direction

---

**SAP BusinessObjects Lumira is a powerful product delivering self-service analytics solution which allows any users to gain instant insights, collaborate, and optimize their business results along with an environment to develop new applications for specific needs and planning requirements.**

**SAP BusinessObjects Lumira fuels creativity through its extensible design and brings simplicity to your daily business.**

**SAP BusinessObjects Lumira will deliver continuous innovations on the following vision:**

- **One product** for data discovery and application design environment
- **Agility** for business users with **trusted BI** and **scale** across organization
- **Simplified** discovery and analysis for insights
- **Embeddable, extensible,** and **interoperable** with custom and SAP solutions
- **Flexible** on-premise, virtualization, and mobile options for all sizes
- **Collective insights** by bringing network of people, data, and actions together
- **Global** operation ready

**This is the current state of planning and may be changed by SAP at any time.**



# Thank you

## Road map contacts for customers and partners

- Gowda Timma Ramu
- Christoph Albrecht

[gowda.timma.ramu@sap.com](mailto:gowda.timma.ramu@sap.com)

[christoph.albrecht@sap.com](mailto:christoph.albrecht@sap.com)

SAP Lumira Product Management

SAP Lumira Product Management



# Key links for more information

## For customers and partners

### Key links

- SAP Lumira
- SAP Lumira tutorials and recording
- SAP Community Network
  
- Road maps on SAP Service Marketplace
- Official tutorials for SAP BI
- IT Planning Resources
- Sizing Guide
  
- Product Documentation
- Product Availability Matrix

<http://saplumira.com>

<http://scn.sap.com/docs/DOC-26507>

<http://scn.sap.com/community/lumira> and

<http://scn.sap.com/community/businessobjects-design-studio>

<http://service.sap.com/saproadmaps>

<http://sap.com/learnbi>

<https://service.sap.com/~sapidb/011000358700001160122012E>

<http://scn.sap.com/docs/DOC-53374> and

<http://service.sap.com/sap/support/notes/1177020>

<http://help.sap.com/>

<https://support.sap.com/release-upgrade-maintenance/pam.html>

### Where to go to provide product feedback and ideas

- SAP Idea Place
- Influence programs
- SAP User Groups

<https://ideas.sap.com>

<http://service.sap.com/influence>

<http://www.sapusergroups.com/>

# © 2016 SAP SE or an SAP affiliate company. All rights reserved.

---

No part of this publication may be reproduced or transmitted in any form or for any purpose without the express permission of SAP SE or an SAP affiliate company.

SAP and other SAP products and services mentioned herein as well as their respective logos are trademarks or registered trademarks of SAP SE (or an SAP affiliate company) in Germany and other countries. Please see <http://global12.sap.com/corporate-en/legal/copyright/index.epx> for additional trademark information and notices.

Some software products marketed by SAP SE and its distributors contain proprietary software components of other software vendors.

National product specifications may vary.

These materials are provided by SAP SE or an SAP affiliate company for informational purposes only, without representation or warranty of any kind, and SAP SE or its affiliated companies shall not be liable for errors or omissions with respect to the materials. The only warranties for SAP SE or SAP affiliate company products and services are those that are set forth in the express warranty statements accompanying such products and services, if any. Nothing herein should be construed as constituting an additional warranty.

In particular, SAP SE or its affiliated companies have no obligation to pursue any course of business outlined in this document or any related presentation, or to develop or release any functionality mentioned therein. This document, or any related presentation, and SAP SE's or its affiliated companies' strategy and possible future developments, products, and/or platform directions and functionality are all subject to change and may be changed by SAP SE or its affiliated companies at any time for any reason without notice. The information in this document is not a commitment, promise, or legal obligation to deliver any material, code, or functionality. All forward-looking statements are subject to various risks and uncertainties that could cause actual results to differ materially from expectations. Readers are cautioned not to place undue reliance on these forward-looking statements, which speak only as of their dates, and they should not be relied upon in making purchasing decisions.

# © 2016 SAP SE oder ein SAP-Konzernunternehmen. Alle Rechte vorbehalten.

---

Weitergabe und Vervielfältigung dieser Publikation oder von Teilen daraus sind, zu welchem Zweck und in welcher Form auch immer, ohne die ausdrückliche schriftliche Genehmigung durch SAP SE oder ein SAP-Konzernunternehmen nicht gestattet.

SAP und andere in diesem Dokument erwähnte Produkte und Dienstleistungen von SAP sowie die dazugehörigen Logos sind Marken oder eingetragene Marken der SAP SE (oder von einem SAP-Konzernunternehmen) in Deutschland und verschiedenen anderen Ländern weltweit.

Weitere Hinweise und Informationen zum Markenrecht finden Sie unter <http://global.sap.com/corporate-de/legal/copyright/index.epx>.

Die von SAP SE oder deren Vertriebsfirmen angebotenen Softwareprodukte können Softwarekomponenten auch anderer Softwarehersteller enthalten.

Produkte können länderspezifische Unterschiede aufweisen.

Die vorliegenden Unterlagen werden von der SAP SE oder einem SAP-Konzernunternehmen bereitgestellt und dienen ausschließlich zu Informationszwecken.

Die SAP SE oder ihre Konzernunternehmen übernehmen keinerlei Haftung oder Gewährleistung für Fehler oder Unvollständigkeiten in dieser Publikation.

Die SAP SE oder ein SAP-Konzernunternehmen steht lediglich für Produkte und Dienstleistungen nach der Maßgabe ein, die in der Vereinbarung über die jeweiligen Produkte und Dienstleistungen ausdrücklich geregelt ist. Keine der hierin enthaltenen Informationen ist als zusätzliche Garantie zu interpretieren.

Insbesondere sind die SAP SE oder ihre Konzernunternehmen in keiner Weise verpflichtet, in dieser Publikation oder einer zugehörigen Präsentation dargestellte Geschäftsabläufe zu verfolgen oder hierin wiedergegebene Funktionen zu entwickeln oder zu veröffentlichen. Diese Publikation oder eine zugehörige Präsentation, die Strategie und etwaige künftige Entwicklungen, Produkte und/oder Plattformen der SAP SE oder ihrer Konzernunternehmen können von der SAP SE oder ihren Konzernunternehmen jederzeit und ohne Angabe von Gründen unangekündigt geändert werden.

Die in dieser Publikation enthaltenen Informationen stellen keine Zusage, kein Versprechen und keine rechtliche Verpflichtung zur Lieferung von Material, Code oder Funktionen dar. Sämtliche vorausschauenden Aussagen unterliegen unterschiedlichen Risiken und Unsicherheiten, durch die die tatsächlichen Ergebnisse von den Erwartungen abweichen können. Die vorausschauenden Aussagen geben die Sicht zu dem Zeitpunkt wieder, zu dem sie getätigt wurden. Dem Leser wird empfohlen, diesen Aussagen kein übertriebenes Vertrauen zu schenken und sich bei Kaufentscheidungen nicht auf sie zu stützen.